

## FORTHCOMING EVENTS

### *In the Studio*

#### **Permanent Damage**

by Tony Green

Tony Green's compelling play was the runner up to *Scorched*, in The Questors National Student Playwriting Competition.

The Play is set in a cluttered attic where two men are holding a third man hostage. Hard hitting and uncompromising, drama, comedy and sexual intrigue interweave as the kidnap attempt falls apart with disastrous results.

11 - 18 May at 7.45pm

### *Next in The Playhouse*

#### **The Prime of Miss Jean Brodie**

adapted from Muriel Spark's novel

by Jay Presson Allen



Mussolini, Hitler and Franco are rampant in Europe when Jean Brodie creates her private havoc in Edinburgh's Marcia Blaine School for Girls.

A spell-binding teacher in her prime, Miss Jean Brodie is stopped in her tracks by one of the girls from her special Brodie set - Sandy, whose grown up memory frames the play. Dramatic, funny and painful, the action zings with Spark's wit and bite.

18, 21-25 May at 7.45pm; 19 May at 2.30pm

Sponsored by

Fuller, Smith & Turner plc · Griffin Brewery, Chiswick, London W4 2QB

### *In the Studio*

#### **Ghosts**

by Henrik Ibsen

Written in 1882 and vilified by the critics Clement Scott in London and William Winter in America, *Ghosts* is a searing examination of family life that is as relevant today as when it was first written. Now considered one of the great classics of world theatre, it deals with the effect that displaced values and outmoded ideas can have on a seemingly respectable society, into which a son is born with inherited syphilis.

8 - 15 June at 7.45pm

### *In the Playhouse*

#### **The Comedy of Errors**

by William Shakespeare

This uproarious comedy involves two sets of identical twins separated as infants. Consternation ensues when they collide, eighteen years later, in Ephesus. Witchcraft is suspected, as the wrong identities become hopelessly entangled. The plot veers dizzily from potential tragedy to a happy ending where parents and children and lovers are reunited.

14, 18 - 22 June at 7.45pm; 16 June at 2.30pm

# METAMORPHOSIS

by Steven Berkoff

based on the story by Franz Kafka



Sponsored by





The production of

# Metamorphosis

is sponsored by

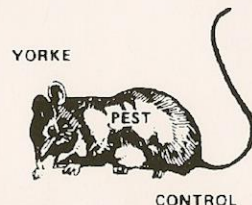
## YORKE PEST CONTROL

approved contractor to the M.O.D. and local authorities

Experts in the control of rodents, birds, flying and all other insect pests.

Yorke Pest Control is a friendly local company, providing a first class service based on traditional values, including:

- ★ Free survey and recommendations
- ★ Fly screening
- ★ Polite and well-trained staff
- ★ Quality at reasonable cost



18 Mill Platt Avenue  
Isleworth, Middlesex TW7 6RD Tel: 0181 568 3092

## METAMORPHOSIS

by Steven Berkoff

based on the story of Franz Kafka

GREGOR SAMSA AWOKE ONE MORNING FROM UNEASY DREAMS AND FOUND HIMSELF TRANSFORMED IN HIS BED INTO A GIGANTIC INSECT are the first words spoken in this brilliant adaptation of Kafka's story.

Berkoff is renowned for his adaptations for the theatre in which athleticism, humour and a highly visual style of performance are predominant.

*Metamorphosis* can perhaps be described as "The Theatre of the Impossible", in which a man becomes an insect that his family reject, then tolerate, then loathe and finally neglect. But it is full of parallels to the human condition where the oppressed and despised struggle heroically with the frailty of human endeavour, greed and ambition. Berkoff's aim in adapting this strange but compelling work is to create total theatre, engaging the senses at all levels with sound, movement, light, text and music while we are totally immersed in life.

Of Berkoff's production at the Mermaid in 1986 the critics wrote:

Conjuring up the nightmare spirit and giving stylised form to all that is dreamlike and grotesque in the human spirit comes naturally to Steven Berkoff. Not surprising, then, that he shows such an uncanny grasp for the essence of Franz Kafka in his adaptation of *Metamorphosis*, at the Mermaid.

This dark parable encapsulates, in its seemingly simple way, the many-layered ironies that underpin so much of everyday humdrum existence.

If nothing else, it suggests that the parasitic nature of mankind is such that you might be well advised to shrink away from loved ones; roll up, as it were, into a personal ball for your own protection.

Keith Nurse, *The Daily Telegraph*

Steven Berkoff's *Metamorphosis* (Mermaid) is not so much a loving adaptation as a savage recreation of Kafka's haunting tale. What is insidiously muted in the original has here become brutal and blatant.

*The Sunday Telegraph*

Giant insect roles are not plentiful in world theatre. Shakespeare, Shaw and Chekhov do not provide any, and the best Ionesco could manage was a play about rhinoceroses.

The lead role in Steven Berkoff's *Metamorphosis*, however, is a commercial traveller who wakes one morning and finds he has turned into a gigantic dung beetle.

Adapted from Franz Kafka's story, it is an absurd, absorbing tale which symbolically explores the ugly pressures sometimes found in family life. If it does not change your attitude to commercial travellers, it might make you nicer to beetles.

David Shannon, *Today*







## ART EXHIBITIONS

UPPER FOYER - 9 MARCH - 6 APRIL 1996

JOHN FLEMONS - Watercolours from France

John Flemons trained at the Chelsea School of Art, and also studied at the University of London Institute of Education and the Birmingham School of Art Education. He was Senior Lecturer at Thomas Huxley College in Ealing, and for ten years was Head of Art at Morley College, where he still teaches.

He has had one-man shows at the University of Birmingham, Queen Mary College, the Cockpit Theatre, Brunel University, Thomas Huxley College and the Morley Gallery.

GRAPEVINE GALLERY - 13 APRIL - 4 MAY 1996

MARGARET EVANS

Margaret Evans began life in York, which perhaps accounts for her great interest in history and architecture. Her grandfather, Thomas Guy, had a house and studio in Stonegate, close to the Minster, and was a well known landscape painter.

She now lives in a Middlesex village, and on retirement from teaching took an intensive course in etching, then obtained the use of an Etching Studio at Brunel University for a year.

She has taken part in, and organised, group exhibitions, has had a solo exhibition at the Mermaid Theatre, and two years running had a D classification by the Royal Academy. A print of St. Paul's was hung by the Bankside Gallery.

## WHY NOT GET MORE OUT OF YOUR MEMBERSHIP?

### *Did you know that . . . . .*

We will give you £5 off your annual membership fee if you introduce a new member to The Questors? For details contact Alice Pennicott in the office on 0181 567 8736

### *And . . . . .*

that by showing your Questors card at the following restaurants you will be eligible for various offers and discounts

Noughts and Crosses  
Caffé Uno  
Pierre Victoire  
Café Cyberia

Full details available from the office.

## INFORMATION

### THE GRAPEVINE CLUB

The Questors has a fully licensed Bar which is now open to all members. The Bar is open every evening plus lunchtimes on Sundays. Questors members are requested to sign in their guests when entering the bar.

### THE HOTPLATE

Delicious hot and cold food is available in the upper Foyer between 6.30pm and 8.00pm during the run of Playhouse productions, and coffee, tea, and cakes are served during the interval. No hot food will be provided at the Sunday matinées.

### NOTE

The Hotplate is not open for Studio productions, but when Studio performances coincide with those in the Playhouse, it will endeavour to serve those audiences whenever this is possible.

### BACKSTAGE PREVIEW

Why not attend one of our new, or prospective members evenings, and have a conducted tour of the Theatre complex. Tours start and finish at the Grapevine Bar, 8.00pm every Wednesday.

### THE STUDENT GROUP

The Questors runs a two year part time student course in Acting; details can be obtained from the office.

### YOUNG PEOPLE'S GROUPS

There are a number of groups for younger members. These cater for all age groups, from 5-17. The classes are intended to create awareness of the theatre and provide a stimulating channel for imagination.

### For The Questors Theatre

Artistic Director	Spencer Butler
Artistic Directorate	John Horwood, Norman Wilkinson
Director of Studies	David Emmet
Chair	John Davey
Vice-Chairman	Steve Harnes
Company Secretary	Sue Blake
Club Secretary	Christine Garland
Finance Director	Ken Kettle
Stage Director	Nick Hawker
Marketing Director	Colin Jarvis
Theatre Manager	Elaine Orchard
Productions Secretary	Christine Greening
Membership Secretary	Alice Pennicott
Marketing Officer	Fleur Lloyd
Programme Editor	Vincent McQueen
Questopics Editor	Peter Knight
Sponsorship	Geoffrey Sellman
Box Office Management	Ken Parker
Programme Sales Organiser	Val Blaxland
Front of House Manager	Eric Lister
Press Relations	Sandra Hutchinson
Haberdashery	Tootal Craft
Wardrobe Equipment	Wilkinson Sword Scissors..Fiskars Ltd
Wardrobe Care	Persil, Comfort and Stergene courtesy of Lever Bros. Dry-cleaning by C.D.S.

### Administration

The Questors office is open from 9.30am until 5.00pm every weekday. If you wish to make contact for details of membership, or hiring the Theatre and rehearsal rooms, telephone the office on 0181-567 0011.

### Membership

If you wish to become a member please fill in the application form (copies in the Foyers); just send it to the Theatre with the appropriate subscription. 0181-567 8736.

### Box Office

For personal callers the box office is open every Wednesday evening 6.45pm to 8.30pm; Monday to Friday 11.00am to 12 noon; during productions 6.45pm to 8.30pm; Sunday matinées 2.00pm to 2.30pm; Studio productions 6.45pm to 8.00pm.