

## FORTHCOMING EVENTS

### In the Playhouse

#### PRIVATE LIVES

by Noël Coward

Noël Coward's best comedy from the 1930's. Being written by "The Master", it is a light, stylish and witty piece about two attractive lovers unable to live together and yet unable to live apart.

12, 14 - 19 March at 7.45pm; 13 March at 2.30pm

Sponsored by  HUNTING  
AVIATION

### In the Playhouse

#### JUDGMENT DAY

by Odön von Hörvath

In a small town the fast trains pass through on the main railway line, but they never stop. One day, a train crashes. Why?

Written in 1938 when the young von Hörvath had been driven from his home and career by the Nazis, *Judgment Day* is a play about the pressure of individual responsibility, guilt and retribution and the part that sex plays in each.

9, 12 - 16 April at 7.45pm; 10 April at 2.30pm

### In the Studio

#### INÉS DE CASTRO

by John Clifford

Inés, the Spanish mistress of a Portuguese prince, finds her future put at risk by political events in which she has no interest or influence. In the last hours of her life she fights to save herself, her family and her optimistic view of human nature.

Despite having been written in 1988, before the changes in Eastern Europe, John Clifford's sombre retelling of a tragic and terrifying medieval legend gains new potency in the light of current events in former Yugoslavia.

23 - 30 April at 7.45pm

#### TIN HUTTERS' JUBILEE

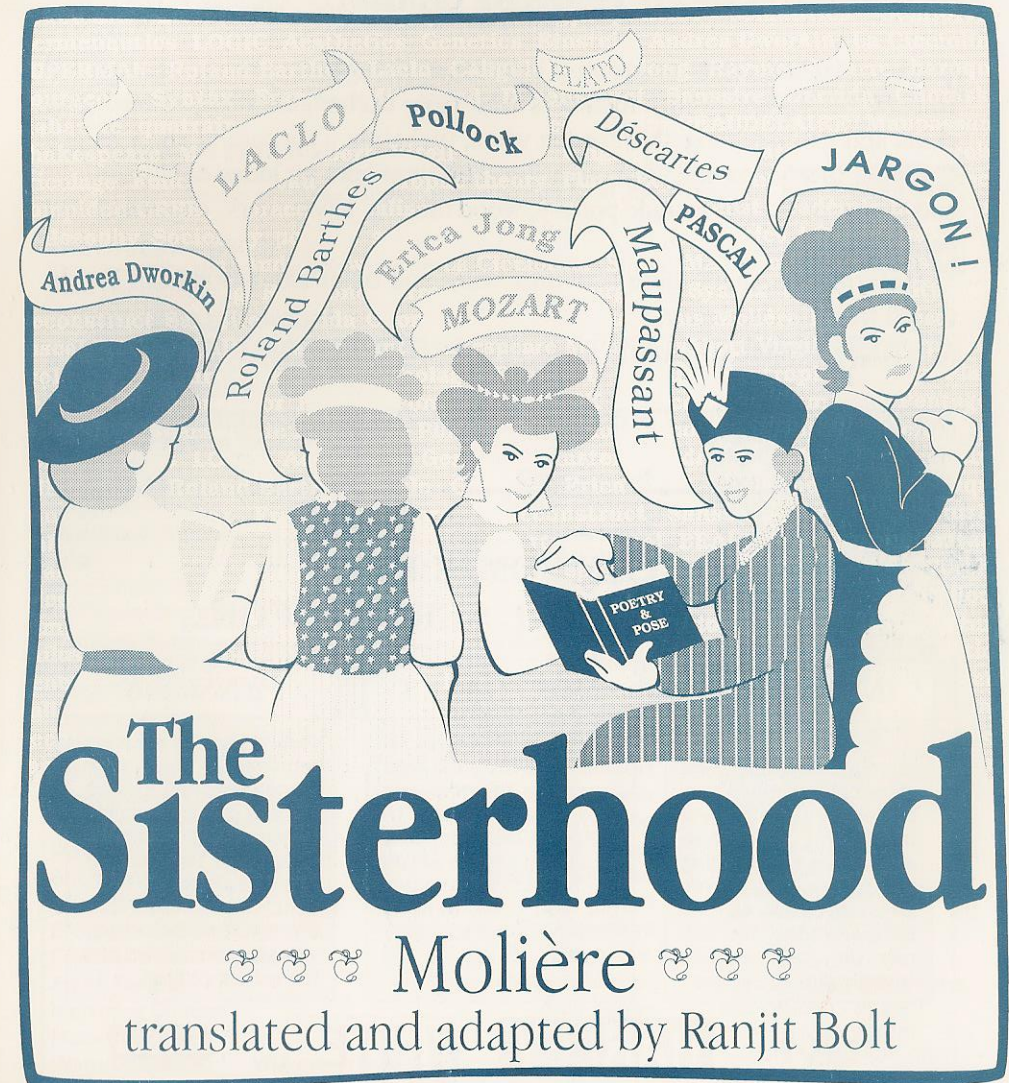
Were you a member of The Questors in the days of the Tin Hut, which was demolished in 1963?

If so, make a note in your diaries of the date Saturday 25th June (the last night of *The Beaux' Stratagem* in the Playhouse), because on that day there is to be another Tin Hutter's Reunion.

The event is being organised by Vincent McQueen and Michael Green. If you know of any old Tin Hutter's who might like to come, but are no longer members, let the organisers know.

THE QUESTORS  
THEATRE

STUDENT GROUP  
PRODUCTION



P R O G R A M M E



## ART EXHIBITION IN THE UPPER FOYER 12 — 26 FEBRUARY 1994

### EXHIBITION OF PICTURES BY CHANDOS ART & CRAFTS

Chandos Art and Crafts is a group of local artists living and working in Ealing and Harrow. There are twenty members who have exchanged ideas, shared their skills and exhibited together for ten years, including a successful show at The Questors four years ago. Although the exhibition here includes only paintings and prints, our crafts include pottery, wood turning, silver work, engraving and painting on glass.

Information about these activities, sales and other exhibitions can be obtained from the secretary:

Mrs Nicky Abbott, 55 Lynton Road, Harrow HA2 9NJ. (081-864 5714).

*Next Exhibition:* In May at the Central Library, Gayton Road, Harrow.

### THE COMPLETE PROFESSIONAL SERVICE FOR...

INSURANCE	MORTGAGES	PENSIONS
Harley White are commercial, business and personal insurance specialists. We find the best rates and offer free quotations with leading companies and Lloyds and computerised motor quotations. You can rely on our fast and friendly claims service.	We pride ourselves in finding quickly the best mortgage for domestic and commercial finance. Whatever your requirements, we will do our best to help; remember, you don't have to find the home you want before talking to us about a loan.	Plan ahead for a happy retirement, free from money worries. Individual and group disability schemes are available to replace income lost due to sickness or accident. Our flexible plans are tailor-made for individuals, companies and the self-employed.



**HARLEY WHITE**



Harley White Group, Sinclair House, The Avenue, Ealing W13 8NT

**081-998 4942**

## INFORMATION

### THE GRAPEVINE CLUB

The Questors has a fully licensed Bar which is now open to all members. The Bar is open every evening plus lunchtimes on Sundays. Questors members are requested to sign in their guests when entering the bar.

### THE HOTPLATE

Delicious hot and cold food is available in the upper Foyer between 6.30pm and 8.00pm during the run of Playhouse productions, and coffee, tea, and cakes are served during the interval. No hot food will be provided at the Sunday matinées.

### NOTE

The Hotplate is not open for Studio productions, but when Studio performances coincide with those in the Playhouse, it will endeavour to serve those audiences whenever this is possible.

### NEW MEMBERS EVENINGS

Why not attend one of our new, or prospective members evenings, and have a conducted tour of the Theatre complex. Tours start and finish at the Grapevine Bar, 8.00pm every Wednesday.

### THE STUDENT GROUP

The Questors runs a two year part time student course in Acting; details can be obtained from the office.

### YOUNG PEOPLE'S GROUPS

There are a number of groups for younger members. These cater for all age groups, from 5-17. The classes are intended to create awareness of the theatre and provide a stimulating channel for imagination.

### For The Questors Theatre

Artistic Director  
Studio Director  
Director of Studies  
Chair  
Vice-Chairman  
Company Secretary  
Club Secretary  
Finance Director  
Stage Director  
Theatre Manager  
Productions Secretary  
Membership Secretary  
Programme Editor  
Questopics Editor  
Marketing Manager  
Sponsorship  
Box Office Manager  
Programme Sales Organiser  
Front of House Manager  
Press Relations  
Marketing Director  
Haberdashery  
Wardrobe Equip.  
Wardrobe Care

David Emmet  
Simon Thomas  
David Emmet  
John Davey  
Doug King  
Sue Blake  
Christine Garland  
Ken Kettle  
Kris Collier  
Elaine Orchard  
Christine Greening  
Alice Pennicott  
Vincent McQueen  
Barbara Neville  
Sam Jennings  
Geoffrey Sellman  
Ken Parker  
Val Blaxland

Eric Lister  
Trish Fox, Sarah Wood  
Paul Ashby  
Tootal Craft  
Wilkinson Sword Scissors . . Fiskars Ltd  
Persil, Comfort and Stergene  
courtesy of Lever Bros.  
Dry-cleaning by C.D.S.

### ADMINISTRATION

The Questors office is open from 9.30am until 5.00pm every weekday. If you wish to make contact for details of membership, or hiring the Theatre and rehearsal rooms, telephone the office on 081-567 0011.

### MEMBERSHIP

If you wish to become a member please fill in the application form (copies in the Foyers); just send it to the Theatre with the appropriate subscription. 081-567 8736.

### BOX OFFICE

For personal callers the box office is open evenings only from 6.45pm to 8.30pm on days of performance and five days prior to each Playhouse production.



# THE SISTERHOOD

A comedy in Five Acts

by Molière

Translated and adapted by Ranjit Bolt

First performance of this production Wednesday, February 23rd 1994

## CAST

(in order of appearance)

Martine (*A Maid*) ..... MARY DAVIES \*  
Henriette (*Daughter of Chrysale and Philaminte,*  
*in love with Clitandre*) ..... NICKI SULLIVAN  
Armande (*Sister of Henriette*) ..... LOUISE COUCHMAN  
Clitandre (*An impoverished youth of*  
*good family, in love with Henriette*) ..... VINCENT WOOD  
Belise (*Chrysale's sister*) ..... DIONNE NEISH  
Ariste (*Chrysale's brother*) ..... ALAN KILBEY \*  
Chrysale (*Philaminte's husband*) ..... ANTHONY CURRAN  
Philaminte (*Wife of Chrysale,*  
*mother of Henriette and Armande*) ..... HELEN LANDAU  
Trissotin (*A Pseud*) ..... CHRISTOPH KENSHOLE  
Vadius (*A Pseud*) ..... DREY RAJ AHIR

\* Acting Members

*The action of the play takes place in Philaminte's salon, Paris*

There will be no interval

The performance will last approximately 1 hour and 20 minutes

## PRODUCTION

Director/Designer ..... JOHN HORWOOD  
Lighting Designers ..... MARTIN SAPSED,  
TRISH FOX  
Sound Designer ..... NIGEL WORSLEY  
Costumes ..... CLARE DUBERLEY  
Stage Manager ..... ROZ PALMER  
Deputy Stage Manager ..... TRACEY FRANCIS  
Assistant Stage Managers ..... CONSUELO RADCLYFFE,  
ROBIN SILVERMAN, PENNY SIMS,  
LOUISE WODEHOUSE-EASTON, KAJSA ZARRY  
Lighting Operator ..... CARL CAMPBELL  
Sound Operator ..... RICHARD MANNING  
Properties ..... KRIS COLLIER  
Special Effects ..... NIGEL WORSLEY  
Construction ..... JON WEBSTER  
Set painting & Graphics ..... GEOFF MOORE  
Wigs and Make Up ..... JOANNA BASS  
CAROLINE HARDING  
Mask ..... JO ALLEN  
Student Group Staff ..... DAVID EMMET,  
GERARD GERNELL, JOHN WILSON

*With thanks to: Moët et Chandon, Nestlé, Cadbury's, Mars,  
Ben Palmer, Chris Sydenham, Tina Harris, Alan Drake*

1. The taking of food and drink into the auditorium is NOT permitted.
2. The use of cameras, video-cameras or tape equipment during the performance is also prohibited.
3. Patrons are requested to turn off portable telephones and beepers in the auditorium, since the activation of these during a performance is offensive to audience and actors alike.



***The Sisterhood*** (*Les Femmes Savantes*) was first performed in 1672. It was his penultimate play and the last of his high comedies. It was also his second attack on the *blue-stockings* — the intellectual ladies of the salons with their refinements of speech and manner, their witticisms, their exultation of the mind and soul and their scorn of all things material. In Molière's time it was considered unnatural for a wife to assume her husband's dominant rôle and for this reason, in the original production, the rôle of Philaminte was played by a man. Molière himself played the part of her ineffectual husband Chrysale, while his wife, the talented yet precocious actress Armande Béjart, took the rôle of their daughter, Henriette.

***Molière*** (really Jean-Baptiste Poquelin) was born in Paris in 1622. He was the son of a wealthy upholsterer attached to the service of the Court. In 1643 he abandoned his study of the law to join a small theatrical troupe known as the Illustre Théâtre, probably because he had fallen in love with the leading lady Madeleine Béjart. In 1645, after this venture had failed, he left for the provinces with the Béjart family and formed a new company of which he was soon to become leader. During this time he perfected his skill as an actor and wrote many farces, now lost, mainly in the style of the *comedia dell'arte*. On 24th October 1658 Molière's company returned to Paris and played at the Louvre before the young king Louis XIV. His farce *Le Docteur Amoureux* was an immediate success and before long the actors were installed in the Court Theatre, Le Petit Bourbon, sharing it with an Italian company under Scaramouche. After the production of *Sganarelle* in 1660 the company moved to the Palais Royal which became their permanent home. Here were first produced some of Molière's masterpieces — *L'École des Maris* (1661), *L'École des Femmes* (1662), *Le Misanthrope* and *Le Médecin Malgré Lui* (both 1666), *L'Avare* (1668), *Les Femmes Savantes* (1672), and *Le Malade Imaginaire* (1673) in which he made his last appearance on 17 February, dying a few hours later. A great deal of Molière's time was spent preparing plays and entertainments for the Court of Louis XIV. Among these plays are his most famous *Le*

*Bourgeois Gentilhomme* (1670) and his most controversial *Tartuffe* (1664) which was banned for its attack on pious hypocrites. In 1662 Molière married his leading lady, Armande Béjart, the youngest sister of Madeleine. It was an unhappy marriage between a spoilt young woman and a much older man, badly overworked and already showing signs of tuberculosis which was to cause his death at the age of fifty one. Nevertheless she was an excellent actress who inspired him to write some of his finest women's parts. She managed the company after his death until 1680 when it was merged with the newly formed Comédie Française.

---

**Ranjit Bolt** is one of this country's leading translators, best known for his stunning transformations of classic French verse into witty and elegant English. His translation of Corneille's *The Liar* and *The Illusion* had hugely successful productions at the Old Vic in 1990. Molière's *Tartuffe* for the Peter Hall Company and Zorrilla's *The Real Don Juan* for the Oxford Stage Company both enjoyed critical acclaim. His hilarious adaptation of Goldoni's *The Venetian Twins* for the RSC is currently in production at The Swan in Stratford. *The Sisterhood* was first performed at the New End Theatre, Hampstead in 1987 and starred Lesley Joseph and Clive Swift.