

FORTHCOMING EVENTS

In the Studio

THE MOTHER

by Bertolt Brecht

translated by Steve Gooch

This is the story of a working woman in the Russia of the first two decades of this century. The Mother of the title is a woman who, unlike Mother Courage in Brecht's later play, learns the lessons of her life and acts upon them.

This early masterpiece, a story with songs by one of the greatest twentieth century playwrights, has been described as Brecht's most perfect work. Don't miss this rare opportunity to see it.

6-13 November at 7.45pm

In the Playhouse

A LITTLE NIGHT MUSIC

by Hugh Wheeler and Stephen Sondheim

As the days lengthen and bad weather closes in, while the brightness of Christmas still seems far away, what better way to lighten our lives than this glorious musical from possibly the greatest living exponent of musical theatre?

Set in turn-of-the-century Sweden, *A Little Night Music* is a funny, romantic, delicate and, at times, erotic musical play with a strong storyline, lots of songs and a great deal of charm.

13, 15-20 November at 7.45pm, 14 November at 2.30pm

Supported by Richard & Eleanor Smith

In the Studio


MARILYN MEETS BOBBY AND JOHNNY

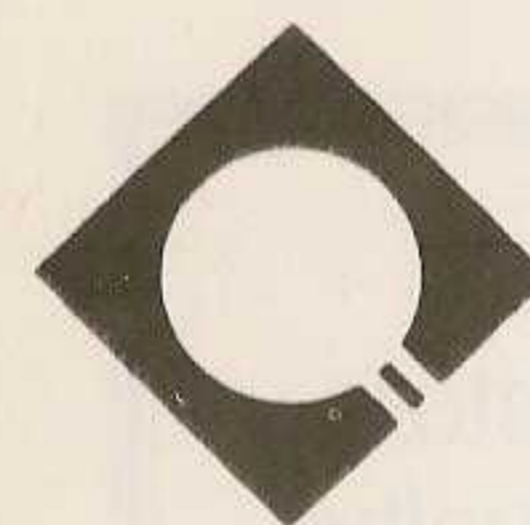
by Tim Plester

When you know that this hard-hitting, raucous, energetic, comic, crude, shocking look at sex, violence and politics is set in America, you should have no difficulty in identifying the Marilyn, Bobby and Johnny of the title.

This play, definitely not for Kennedy worshippers or prudes, is the winner of our 1992 Student Playwriting Competition. What were *you* doing the day J.F.K. was assassinated?

27-30 November, 1-4 December at 7.45pm

Sponsored by Grant Thornton 



THE

QUESTORS

THEATRE

BT Biennial 1993

for the Little Theatre Guild of Great Britain

Shakespeare

County

P WC i     Fy

by Peter Whelan

Biennial sponsored by



The Questors production
sponsored by



MIDLAND

We at the Midland, as bankers to The Questors Theatre, are pleased to have the opportunity once again to sponsor a Questors production.

We wish the company much success with *Shakespeare Country* and can assure them that we shall not only be "Listening" but watching!

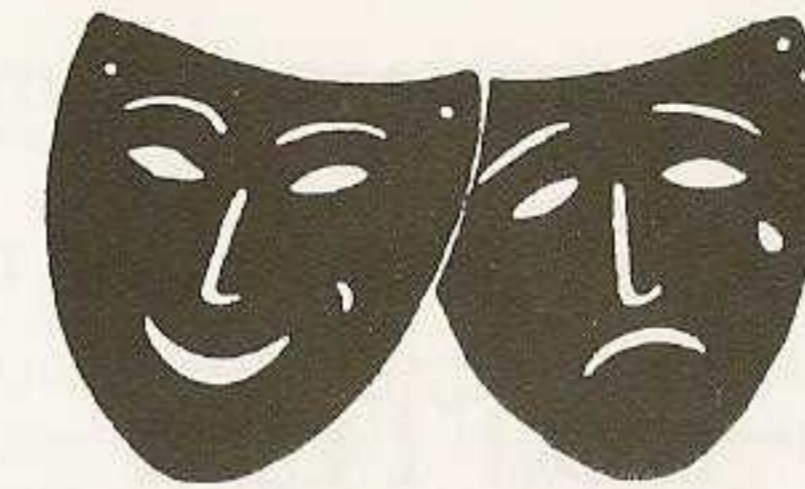


MIDLAND

member HSBC  group

The Listening Bank

We will be pleased to listen to you at your local Midland branch, situated at 46 The Broadway, Ealing W5 5JZ.



BT Biennial

for the Little Theatre Guild of Great Britain

INTRODUCTION TO THE BT BIENNIAL

The BT Biennial was created in 1991 to raise public awareness of the enormous cultural range and depth of the Amateur Theatre which comprises over 12,000 organisations in Britain. BT chose to do this with, and through, the Little Theatre Guild (LTG). In many ways the LTG forms the pinnacle of amateur achievement and incorporates over 65 theatre groups each one financially viable, controlling their own buildings and performing throughout the year.

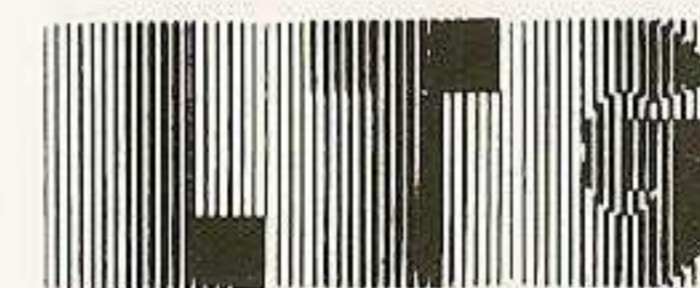
The first BT Biennial was focused upon the specially commissioned play *Happy Families* by John Godber. It was performed in 49 theatres around Britain. More than 75,000 people attended the opening season. The impact of the event has helped the theatres to raise their profile in their community.

The second BT Biennial was launched on 16th October 1993 — again with some 50 theatres participating and featuring the play *Shakespeare Country* by Peter Whelan, the distinguished Royal Shakespeare Company writer.

As in 1991 the Biennial has encompassed far more than just the play. It has included a series of regional Marketing Seminars to help each theatre focus on its special needs and to take advantage of the BT Biennial to achieve particular targets; a competition to design the logo for the play was held and won by David Charters — the prize will help the Plaza Theatre, Romsey install access for the disabled and hearing facilities for the deaf. In addition, the sponsorship included a major two day residential Workshop at BT's training college in Stone, Staffordshire where Peter Whelan presented his new play with the help of the Orchard Theatre Company and where directors from each of the participating theatres had the unique opportunity of discussing ideas and difficulties with the playwright.

In 1993 for the first time theatre companies who are not LTG members have been invited to participate in the BT Biennial and it is planned that in 1995 the number of theatres joining the Biennial will exceed 100. Finally, the 1993 launch will constitute the largest simultaneous first night of a new play in history.

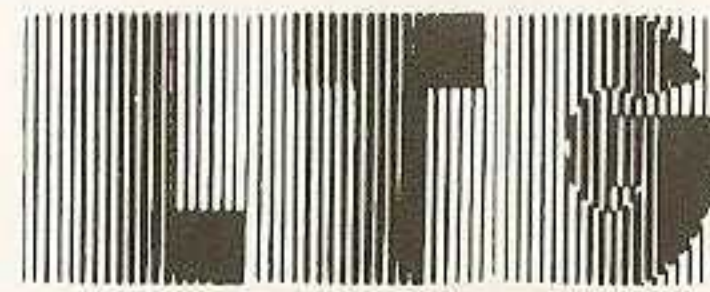
LORNA CAMERON



BT 
In the community

BT BIENNIAL 1993 LOTTERY

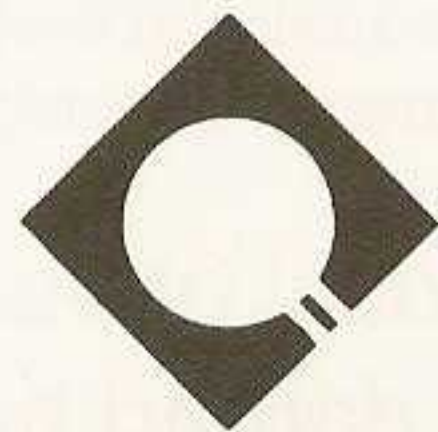
This year as an additional part of their sponsorship BT has organised a Lottery to help raise funds for LTG theatres. All proceeds from the tickets we sell will go to The Questors Theatre. Lottery tickets are on sale now in the Foyers. Please help to support your theatre.



A FEW DROPS OF WATER

The story of The Questors Theatre
1929 - 1989

by Gwenan Evans and others



On sale now at the Foyer Bookstall

SHAKESPEARE COUNTRY

Editor's Note

This is the second Biennial sponsored by British Telecom. Forty-nine amateur theatres around the country are concurrently performing the première of tonight's play, which BT specially commissioned from Peter Whelan, who is a long-standing Questors member.

Peter Whelan joined The Questors 35 years ago, along with ex-Kiel University colleague Ffrangcon, whom he later married and who is playing the part of Aurelia in this play. He soon became much involved with The Questors both as actor and producer, though his involvement has been limited since turning his talents to full-time playwriting.

The Royal Shakespeare Company were quick to recognise Peter's merit and have produced all his plays, which include *Captain Swing*, *The Accrington Pals*, *Clay*, and *The Bright and Bold Design*. His latest work, concerning Christopher Marlowe, *School of Night*, was premièred at The Pit earlier this year to widespread acclaim. At The Questors we have produced *The Accrington Pals* and *Clay* (when are we going to do *Captain Swing*? Ed.). We are delighted to be involved in BT's enlightened sponsoring and this latest output of Peter's perceptive and prolific pen.

Author's Note

I've never had an idea for a play in church before. I was in Holy Trinity, Stratford on Avon, looking at Shakespeare's tomb. The leaflet pointed out that Shakespeare's line had died out in the 18th century and I felt a bit sad about it. I began to invent possible ways round this . . . after all, wasn't it the poet Davenant who claimed to be Will's illegitimate son? And if one bastard why not another?

But it was several jumps ahead from this that I arrived at a comedy springing from *A Midsummer Night's Dream*. Then I had a real problem: how do you tell a story of lovers in disarray finally sorted out and united in marriage in an age when marriage itself is in disarray?

I still wanted it to be a play of reconciliation, for I was thinking it over at the time the Berlin wall came down and the air was full of hope. Then, when I got this commission and sat down to write, the world had fallen apart again. Now there is a shadow across the story

PETER WHELAN

Producer's Note

This is a play about reconciliation. Is there some cosmic reason for the ills that currently beset our troubled world? Or should we eschew our gods, and face up to the fact that war, pollution, famine, the breakdown of our institutions, are of our own making, and only we can heal our world, without recourse to religion or superstition?

A Midsummer Night's Dream, which is one of the inspirations for *Shakespeare Country*, was written at a time when belief in fairies and the supernatural was on the wane. It is a play about the falling out of love, and about reconciliation in the form of marriage. Peter Whelan's view is that over the past 30 years one of the greatest changes to occur in our society is the unprecedented breakdown of the institution of marriage. To write a play about this subject nowadays requires irony, and if there are any fairies or elves hidden out there in the copses between the motorways, they are creatures more of pity than of power.

SHAKESPEARE COUNTRY

by Peter Whelan

First performance of this production Saturday, October 16th 1993

CAST (in order of speaking)

Rafe Duke MARK THOMPSON-NEALE
Zana Ferris SARAH MORRISON
Billy Shake PIERS WHIBLEY
Koichi Bando JOHN DOBSON
Mira Edge LOUISE ISIDOROS
Gunter Kaufman JOHN ROBB
Aurelia Ward FFRANGCON WHELAN
Dan Howard TOM HAMPTON
Bonny Lee AMANDA BERNSTEIN
Webbo GLENDA SMITH
405 DAVID HOVATTER
Guests HELEIN TREUHAFT,
JAY SARWAR, LEILA BAYANDOG,
SAM KLIGER, PETER GRACE,
PHIL PINKHAM, KATRINA O'CONNOR, KAJSA ZARRY

The play is set in and around Stratford-upon-Avon.

Time: the present

The performance on 20th October will be signed for the deaf
by Gloria Ogborn. This will be sponsored by BT.

There will be one interval of twenty minutes between Acts 1 and 2.

THE PLAYHOUSE IS EQUIPPED WITH AN INFRA-RED SOUND TRANSMISSION SYSTEM FOR USE BY PEOPLE WITH HEARING DIFFICULTIES. To obtain a headset please contact the duty house manager. The Playhouse is equipped with a lift for the benefit of those with mobility problems. The Questors acknowledges the generosity of the ADAPT fund in making this possible.

PRODUCTION

Director LYN JONES
Designer PHIL PINKHAM
Costume Designer SYLVIA WALL
Stage Manager JON WEBSTER
Lighting Designer MARTIN SAPSED
Sound IAN HOWLETT
Sound Operator ELAINE MERCER
Properties JAY SARWAR
Deputy Stage Manager HELEIN TREUHAFT
Assistant Stage Managers SARAH FINK,
HUW LANGRIDGE, ROZ PALMER,
JOANNA ZACHARIDES, KAJSA ZARRY
Construction PHIL PINKHAM,
KRIS COLLIER, SANDRA COVENTRY,
AMRITPAL MAHAL, JIM CAITHNESS,
JIM CRADDOCK, JACKIE DOVER
Prompter GEOFF MILLER
Wardrobe JANE GOTTS, VALERIE RUDD

With special thanks to: Lyn Neville, Crystal Dealer, 071-585 0586,
for the loan of crystals.

Sean O'Dwyer in Dublin for allowing us to use his recordings of the
ancient bronze horns of Ireland.

Don Kincaid for his help with the singing.

Anne Collis for the loan of her wedding dress.

Motorcycle City for motorcycle gear.

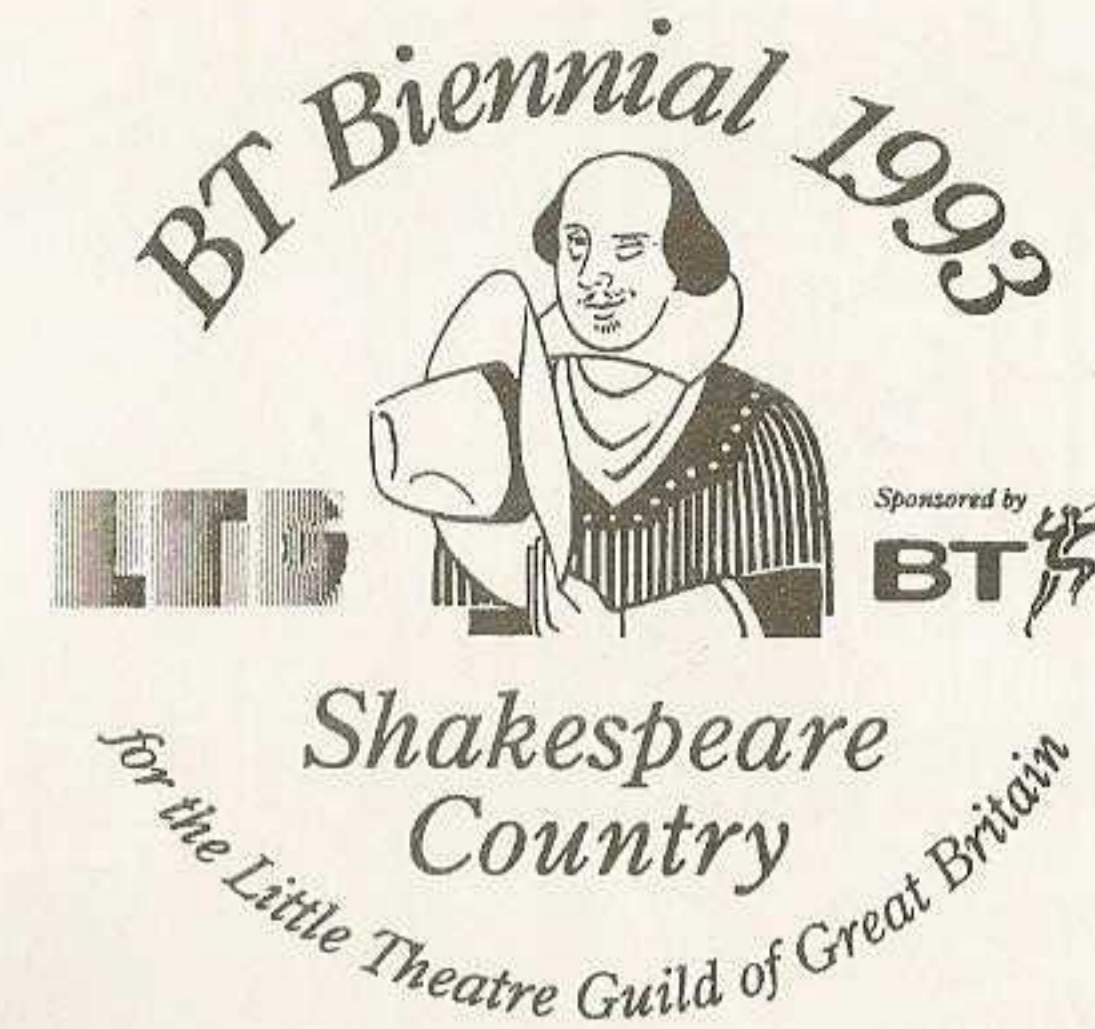
Patrons are requested to turn off portable telephones and beepers in the auditorium, since the activation of these during a performance is offensive to audience and actors alike. The taking of food and drink into the auditorium is NOT permitted, neither is the use of cameras, video-cameras or tape equipment during the performance.

**ART EXHIBITION
IN THE UPPER FOYER
16 - 23 OCTOBER 1993**

CATHLEEN COLE - SUSAN NICE

Cathleen Cole lives in Chessington, Surrey. She works from home designing and hand-painting birthday cards and notelets. She has exhibited at the Surbiton and Chelmsford Art Societies' exhibitions.

Susan Nice lives in Chessington. She trained as a draughtswoman and studied art at a local college. Her most recent work includes commissions of animals.



There are 47 theatres participating in this year's BT Biennial Event, 38 of whom are members of the Little Theatre Guild. The play opens on Saturday 16th October making this the biggest Première ever.

So GOOD LUCK and BEST WISHES to every theatre group and every individual involved in these productions.

Here is the final list of participating theatres:

- | | |
|-------------------------------------|---|
| Robin Hood Theatre, Averham, Newark | Rugby Theatre |
| Bolton Little Theatre | Studio Theatre, Salisbury |
| New Venture Theatre, Brighton | South London Theatre Centre |
| Bromley Little Theatre | Stockport Garrick Theatre |
| Green Room Club, Carlisle | Highbury Little Theatre, Sutton Coldfield |
| Miller Centre Players, Caterham | Oast Theatre, Tonbridge |
| Chorley ADOS | Lindley Players, Whitstable |
| Criterion Theatre, Coventry | Wokingham Theatre |
| Wharf Theatre, Devizes | Woodley Players |
| Guild of Players, Dumfries | Playgoers Club, Workington |
| The Questors Theatre, Ealing | Grove Park Little Theatre, Wrexham |
| Nomads, East Horsley | Sharon Players, Tel Aviv |
| Caxton Players, Great Grimsby | |
| Archway Theatre, Horley | |
| Ilkley Players | <i>And also:</i> |
| Priory Theatre, Kenilworth | Bangor Drama Club, N. Ireland |
| Loft Theatre, Leamington Spa | Castle Payers, Barnard Castle |
| Lewes Theatre Club | Cardiff Little Theatre |
| Theatr Fach, Llangefni | Theatr Marldan, Cardigan |
| Apollo Theatre, Moulton | Mayfield Players |
| Lacemarket Theatre, Nottingham | Green Theatre Youth Co., New Malden |
| Oldbury Repertory Players | Cotswold Players, Stroud |
| Progress Theatre, Reading | Swansea Little Theatre |
| Richmond Shakespeare Society | Wilstead Players |
| Plaza Theatre, Romsey | |

**THE COMPLETE
PROFESSIONAL SERVICE FOR...**

<i>INSURANCE</i>	<i>MORTGAGES</i>	<i>PENSIONS</i>
Harley White are commercial, business and personal insurance specialists. We find the best rates and offer free quotations with leading companies and Lloyds and computerised motor quotations. You can rely on our fast and friendly claims service.	We pride ourselves in finding quickly the best mortgage for domestic and commercial finance. Whatever your requirements, we will do our best to help; remember, you don't have to find the home you want before talking to us about a loan.	Plan ahead for a happy retirement, free from money worries. Individual and group disability schemes are available to replace income lost due to sickness or accident. Our flexible plans are tailor-made for individuals, companies and the self-employed.

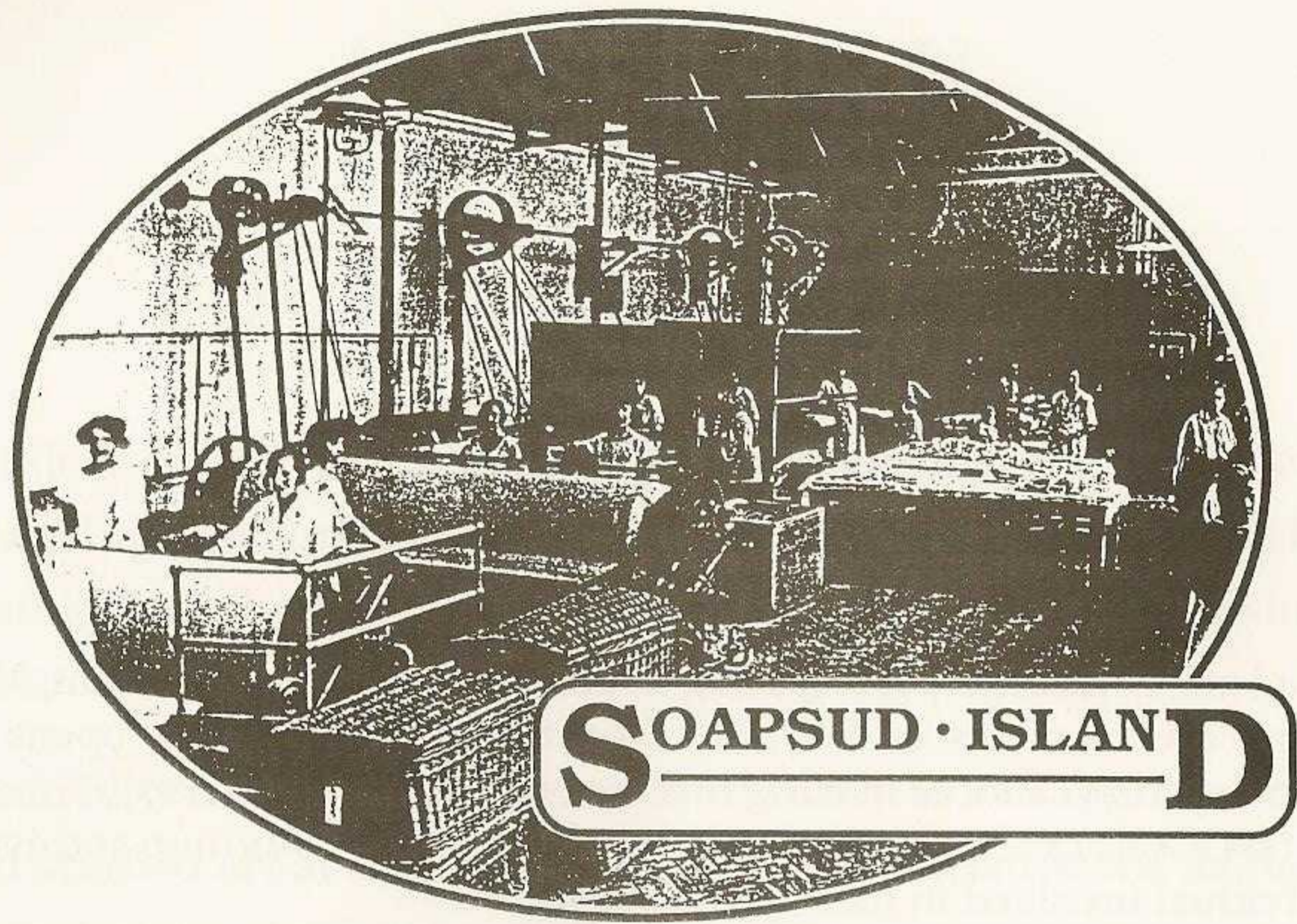


HARLEY WHITE



Harley White Group, Sinclair House, The Avenue, Ealing W13 8NT

081-998 4942



Memories of the Acton Laundries

Copies of Playback's first collection of reminiscences are now available from the Foyer Bookstall priced £1.50 . . . excerpts from the interviews on which "Soapsud Island" was based.

THE QUESTORS THEATRE 

INFORMATION

THE GRAPEVINE CLUB

The Questors has a fully licensed Bar which is now open to all members. The Bar is open every evening plus lunchtimes on Sundays. Questors members are requested to sign in their guests when entering the bar.

THE HOTPLATE

Delicious hot and cold food is available in the upper Foyer between 6.30pm and 8.00pm during the run of Playhouse productions, and coffee, tea, and cakes are served during the interval. No hot food will be provided at the Sunday matinées.

NOTE

The Hotplate is not open for Studio productions, but when Studio performances coincide with those in the Playhouse, it will endeavour to serve those audiences whenever this is possible.

NEW MEMBERS EVENINGS

Why not attend one of our new, or prospective members evenings, and have a conducted tour of the Theatre complex. Tours start and finish at the Grapevine Bar, 8.00pm every Wednesday.

THE STUDENT GROUP

The Questors runs a two year part time student course in Acting; details can be obtained from the office.

YOUNG PEOPLE'S GROUPS

There are a number of groups for younger members. These cater for all age groups, from 5-17. The classes are intended to create awareness of the theatre and provide a stimulating channel for imagination.

For The Questors Theatre

Artistic Director
 Studio Director
 Director of Studies
 Chair
 Vice-Chairman
 Company Secretary
 Club Secretary
 Finance Director
 Stage Director
 Theatre Manager
 Productions Administrator
 Membership Secretary
 Programme Editor
 Questopics Editor
 Marketing Manager
 Sponsorship
 Box Office Manager
 Programme Sales Organiser
 Front of House Manager
 Press Officer
 Floral displays
 Haberdashery
 Wardrobe Equip. **Wilkinson Sword Scissors . . Fiskars Ltd**
 Wardrobe Care **Persil, Comfort and Stergene**
courtesy of Lever Bros.
Dry-cleaning by C.D.S.

David Emmet
Simon Thomas
David Emmet
John Davey
Doug King
Sue Blake
Christine Garland
Ken Kettle
Kris Collier
Elaine Orchard
Jill Gee
Alice Pennicott
Vincent McQueen
Barbara Neville
Sam Jennings
Geoffrey Sellman
Ken Parker
Val Blaxland
Eric Lister
Sarah Wood
Barralets of Ealing
Tootal Craft

ADMINISTRATION

The Questors office is open from 9.30am until 5.00pm every weekday. If you wish to make contact for details of membership, or hiring the Theatre and rehearsal rooms, telephone the office on **081-567 0011**.

MEMBERSHIP

If you wish to become a member please fill in the application form (copies in the Foyers); just send it to the Theatre with the appropriate subscription. **081-567 8736**.

BOX OFFICE

For personal callers the box office is open evenings only from 6.45pm to 8.30pm on days of performance and five days prior to each Playhouse production.