

FORTHCOMING EVENTS

In the Studio

Winner of the 1991/1992 Student Playwriting Competition

"REJOICE"

by David Howard

David, who lives in Cheshire, has recently completed an M.A. in Playwriting Studies at Birmingham University.

The play, the title of which refers to Margaret Thatcher's famous quote, is a thriller with a punch. An ordinary married couple find their lives turned upside down when Jack, a Falklands veteran, meets up with Tod, an old army colleague.

18 — 25 July at 7.45pm. Tickets £3.50

In the Studio

LATE NIGHT EXTRA JUST US

by Michael Law

A REHEARSED READING OF A NEW PLAY

A middle-aged brother and sister await the arrival of the family for their father's birthday party — the father lies dead in the armchair!

Running time: 35 minutes

One performance only. Friday 24 July at 10.30pm. Tickets: 50p

In the Playhouse

THE TEL AVIV COMMUNITY THEATRE TEIBELE AND HER DEMON

by Isaac Bashevis Singer

This play by the celebrated writer and Nobel prize winner is presented by the Tel Aviv Community Theatre (TACT) as part of an English tour.

Don't miss this exciting production.

One performance only. Sunday July 26 at 7.45pm. Tickets £3.50

In the Studio

EMPTY SPACE THEATRE COMPANY THE CURSE OF THE PHAROHS

by Robin Brooks

An opportunity for members and guests to share with the general public a look at one of the country's leading small-scale touring companies in their latest première production.

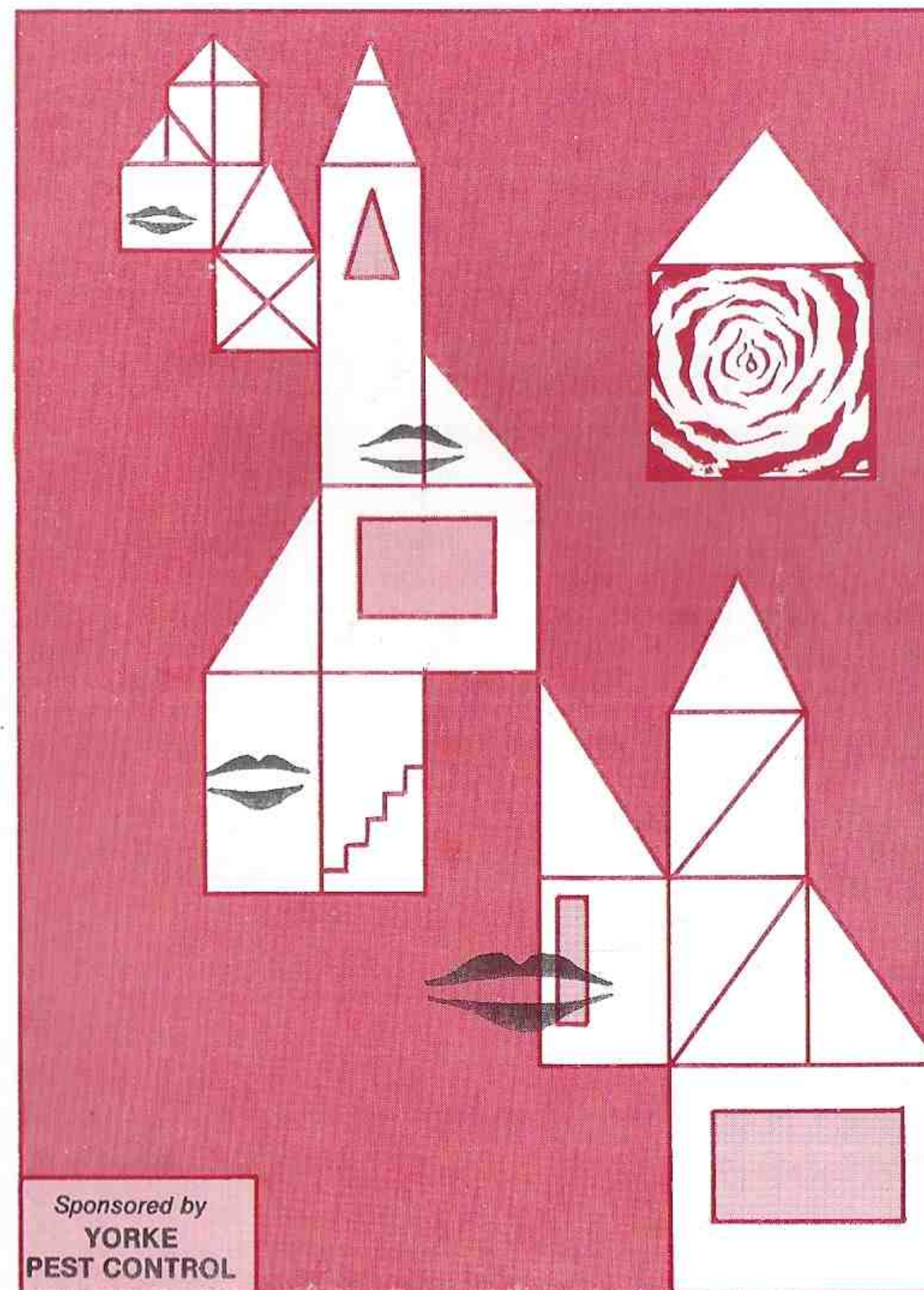
8-13 September at 7.45pm; Saturday Matinée 12 September at 3.00pm.
Tickets £5.00.

Printed and published by THE QUESTORS LIMITED



THE
QUESTORS
THEATRE

A Student Group Production



DOÑA ROSITA THE SPINSTER and

THE SHOEMAKER'S WONDERFUL WIFE

by **Federico García Lorca**
Translated by **Gwynne Edwards**

The production of
DOÑA ROSITA THE SPINSTER

and
**THE SHOEMAKER'S
WONDERFUL WIFE**

is sponsored by
YORKE PEST CONTROL

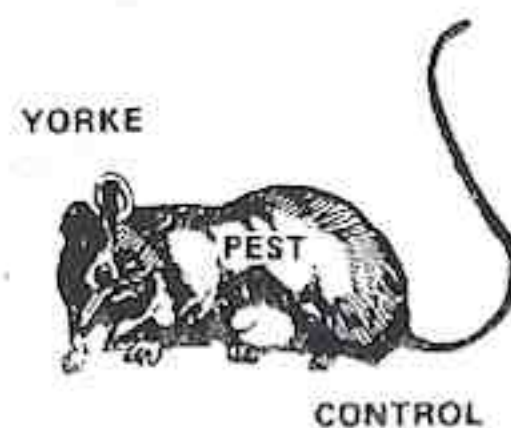
Approved contractor to the M.O.D. and local authorities

Experts in the control of rodents, birds, flying and all other insect pests.

Yorke Pest Control is a friendly local company, providing a first-class service based on traditional values, including:

- ★ Free survey and recommendations
- ★ 24-hour emergency call-out service
- ★ Polite and well-trained staff
- ★ Quality at reasonable cost

18 Mill Platt Avenue
Isleworth, Middx. TW7 6RO
Tel: 081-568 3092
Emergency Number: 0459 - 104719



DONÑA ROSITA THE SPINSTER

by **Federico García Lorca**

Translated by **Gwynne Edwards**

First performance Saturday 11th July 1992

Granada is an easy-going town, made for the contemplative life, a town in which, better than anywhere else, the lover writes his sweetheart's name on the ground. The hours are longer and sweeter there than in any other Spanish town. Granada has complicated sunsets composed of extraordinary colours which you feel will never fade (...) Granada has any amount of good ideas but is incapable of acting on them. Only in such a town, with its inertia and tranquility, can there exist those exquisite contemplators of water, temperatures and sunsets that we find in Granada. The *Granadino* is surrounded by nature's most lavish display, but he never reaches out to it.

Lorca . . . On Granada

Cast:

The Nephew	PAUL MAITLAND
Mr. X	BYRON TODD
Spinster's Mother, 1st Manola and Youth ...	LOUISE ISIDOROS
3rd Manola, 2nd Spinster	HELEN GEORGIU
The Ayola	AOIFE MURPHY
Rosita	HELEN SANDERS
2nd Manola, 1st Spinster	SAMANTHA DAVEY
Uncle and Don Martín	MICHAEL LARKIN
Housekeeper	CHARLOTTE EATON
Aunt	SARA PRUCE

The action takes place over 25 years in Granada.

Every day I'm convinced more and more of how marvellous this country is.....A few days ago a purple-green moon came out over the bluish mist of the Sierra Nevada and in front of my door a woman sang a *berceuse* that was like a golden streamer entangling the whole countryside. Especially at twilight one lives in the fullest fantasy, a half-erased dream.....There are times when everything evaporates and we're left in a desert of pearl grey, of rose and dead silver. I can't describe to you the vastness of this plain and this little white village in the midst of dark poplar groves.

At night our very flesh hurts from so many bright stars.....

Letter to Adolfo Salazar, 1921

THERE WILL BE AN INTERVAL OF FIFTEEN MINUTES

THE SHOEMAKER'S WONDERFUL WIFE

by **Federico García Lorca**

Translated by **Gwynne Edwards**

Distinguished ladies and gentlemen...*(Pause.)* Or rather, ladies and gentlemen, which is not to say the writer doesn't think you are distinguished. In fact, the opposite. But the word contains the tiniest hint of fear, a kind of plea for the audience to be kind to the actors' performance and the writer's brilliance. The writer doesn't ask for kindness; just for attention once he's leapt that barbed and dreadful barrier of fear that writers have of writing for the theatre. Because of this, which is quite absurd, and because the theatre is often simply a business, poetry has disappeared from the stage in search of other places where audiences will not be shocked, for instance, when a tree becomes a puff of smoke, or three small fishes, obeying a command, become three million to satisfy the hunger of the multitude. This writer has chosen to express a dramatic concept in the lively rhythm of a lowly little shoemaker's wife....

*The Dramatist's opening speech
from the Prologue to **The Shoemaker's Wonderful Wife**,
trans. Gwynne Edwards, in Lorca's **Plays: Two**, 1990*

Cast:

The Shoemaker	PAUL MAITLAND
The Mayor	BYRON TODD
Red Neighbour	LOUISE ISIDOROS
The Boy	HELEN GEORGIU
The Wife	AOIFE MURPHY
Black Neighbour	HELEN SANDERS
Green Neighbour and Young Man with Hat	SAMANTHA DAVEY
Young Man with Sash	MICHAEL LARKIN
Purple Neighbour	CHARLOTTE EATON
Yellow Neighbour	SARA PRUCE
Don Blackbird	MICHAEL MOYLAN

The action takes place within the Shoemaker's house.

THE PLAYHOUSE IS EQUIPPED WITH AN INFRA-RED SOUND TRANSMISSION SYSTEM FOR USE BY PEOPLE WITH HEARING DIFFICULTIES. To obtain a headset please contact the duty house manager.

The Playhouse is equipped with a lift for the benefit of those with mobility problems. The Questors acknowledges the generosity of the ADAPT fund in making this possible.

Production:

Directed by	MAGGIE WILKINSON
Sets designed by	KRIS COLLIER
Costume Design	<i>with many thanks to</i> THE WARDROBE STAFF
Lighting Designer	ALAN B. SMITH
Sound by	RICHARD & ESTHER HETHERINGTON
Music Composed by	IAN AMOS
Artwork by	ALISON CLARKE
Stage Management	"THE MANAGEMENT"
Deputy Stage Manager	LINDA McDONALD
Assisted by	NIGEL BAMFORD, LYNNE BELL, LORRAINE COOK, MIKE GANNON, ALKA GULATI, RUSSELL HILL, OSSIE PELED, TREVOR CARDEN
Lighting Operator	PIPPA SLARK
Sound Operator	NIGEL WORSLEY
Recording Engineer	JAMILA SARWAR
Properties	GRAHAM CARPENTER
Construction	PAIGE BELL, TAMSIN DORLING, LINDA HODSON, CALIRE LE VESCONTE, TONY VASILI of GREASEPAINT
Make-up and Wigs	KATY GALLANTRY SUE OLIVER
Food by	
Prompter	

Special thanks to **TESSA CURTIS, TONY GODELL,**
ROB HUGHES, JERRY SOPER, ANDREW SMITH, JOHN STACEY

Spain is always moved by *duende*, being a country of ancient music and dance, where the *duende* squeezes lemons of daybreak, as well as being a nation of death, a nation open to death.

In every country death has finality. It arrives and the blinds are drawn. Not in Spain. In Spain they are lifted. Many Spaniards live between walls until the day they die, when they are taken out to the sun. A dead person in Spain is more alive when dead than is the case anywhere else — his profile cuts like the edge of a barber's razor.

'Theory and Function of the *Duende*', *Selected Poems*.

Patrons are requested to turn off portable telephones and beepers in the auditorium, since the activation of these during a performance is offensive to audience and actors alike. The taking of food and drink into the auditorium is NOT permitted, neither is the use of cameras, video-cameras or tape equipment during the performance.

ART EXHIBITION IN THE UPPER FOYER

11 — 26 July 1992

THE BUCKINGHAMSHIRE HIGHER DIPLOMA FINE ART COURSE AT AMERSHAM AND WYCOMBE COLLEGE

Amersham and Wycombe College have enjoyed a longstanding relationship with The Questors Theatre for some 10 years, holding exhibitions of paintings by students and members of staff.

The students are mainly adults, studying fine art on a modular programme of study, either full or part-time.

This Exhibition presents the work of students who have recently completed the course.

THE COMPLETE PROFESSIONAL SERVICE FOR...

INSURANCE

Harley White are commercial, business and personal insurance specialists. We find the best rates and offer free quotations with leading companies and Lloyds and computerised motor quotations. You can rely on our fast and friendly claims service.

MORTGAGES

We pride ourselves in finding quickly the best mortgage for domestic and commercial finance. Whatever your requirements, we will do our best to help; remember, you don't have to find the home you want before talking to us about a loan.

PENSIONS

Plan ahead for a happy retirement, free from money worries. Individual and group disability schemes are available to replace income lost due to sickness or accident. Our flexible plans are tailor-made for individuals, companies and the self-employed.



HARLEY WHITE



Harley White Group, Sinclair House, The Avenue, Ealing W13 8NT

081-998 4942

INFORMATION

THE GRAPEVINE CLUB

The Questors has a fully licensed Bar which is now open to all members. The Bar is open every evening plus lunchtimes on Sundays. Questors members are requested to sign in their guests when entering the bar.

THE HOTPLATE

Delicious hot and cold food is available in the upper Foyer between 6.30pm and 8.00pm during the run of Playhouse productions, and coffee, tea, and cakes are served during the interval. No hot food will be provided at the Sunday matinées.

NOTE

The Hotplate is not open for Studio productions, but when Studio performances coincide with those in the Playhouse, it will endeavour to serve those audiences whenever this is possible.

NEW MEMBERS EVENINGS

Why not attend one of our new, or prospective members evenings, and have a conducted tour of the Theatre complex. Tours start and finish at the Grapevine Bar, 8.00pm every Wednesday.

THE STUDENT GROUP

The Questors runs a two year part time student course in Acting; details can be obtained from the office.

YOUNG PEOPLE'S GROUPS

There are a number of groups for younger members. These cater for all age groups, from 5-17. The classes are intended to create awareness of the theatre and provide a stimulating channel for imagination.

For The Questors Theatre

Artistic Director
Studio Director
Director of Studies
Chairman
Vice-Chairman
Secretary
Finance Director
Administrative Director
Stage Director
Theatre Manager
Productions Administrator
Membership Secretary
Programme Editor
Questopics Editor
Press Officer
Sponsorship
Box Office Manager
Programme Sales Organiser
Marketing Manager
Front of House Manager
Floral displays
Haberdashery
Wardrobe Equip.
Wardrobe Care

David Emmet
Simon Thomas
David Emmet
Martin Bowley
Doug King
Fiona Nicholson
Ken Kettle
Jim Craddock
Steve Anderson
Elaine Orchard
Jill Gee
Alice Pennicott
Vincent McQueen
Barbara Neville
Sam Jennings
Geoffrey Sellman
Ken Parker
Val Blaxland
Robert Gordon Clark
Roger Kelly
Barralets of Ealing
Tootal Craft
Wilkinson Sword Scissors . . Fiskars Ltd
Persil, Comfort and Stergene
courtesy of Lever Bros.
Dry-cleaning by C.D.S.

ADMINISTRATION

The Questors office is open from 9.30am until 5.00pm every weekday. If you wish to make contact for details of membership, or hiring the Theatre and rehearsal rooms, telephone the office on 081-567 0011.

MEMBERSHIP

If you wish to become a member please fill in the application form (copies in the Foyers); just send it to the Theatre with the appropriate subscription. 081-567 8736.

BOX OFFICE

For personal callers the box office is open evenings only from 6.45pm to 8.30pm on days of performance and five days prior to each Playhouse production.