

FORTHCOMING EVENTS

In the Studio

YERMA

by Federico García Lorca

A major play by Spain's foremost playwright and poet

20, 21, 22, 23, 24, 25, 26, 27 July at 7.45pm

In the Studio

DIRECTORS SHOWCASE

An extra production designed to display the talents of new directors.

THE BIRD OF PARADISE by R.D. Laing

DAVID'S BIRTHDAY by Gillian Plowman

MOTHER FIGURE by Alan Ayckbourn

1, 2, 3 August at 7.45pm

In the Playhouse: 1991/92 Season

September: **THE SECRET RAPTURE** by David Hare

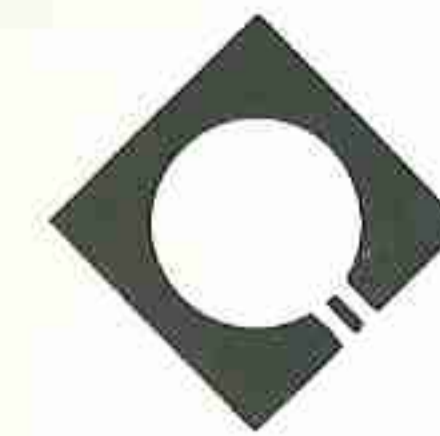
October: **HAPPY FAMILIES** by John Godber

November: **PERICLES** by William Shakespeare

December: **MEN SHOULD WEEP** by Ena Lamont Stewart

Christmas: **THE HAPPIEST OF THE THREE** a farce by Eugene Labiche

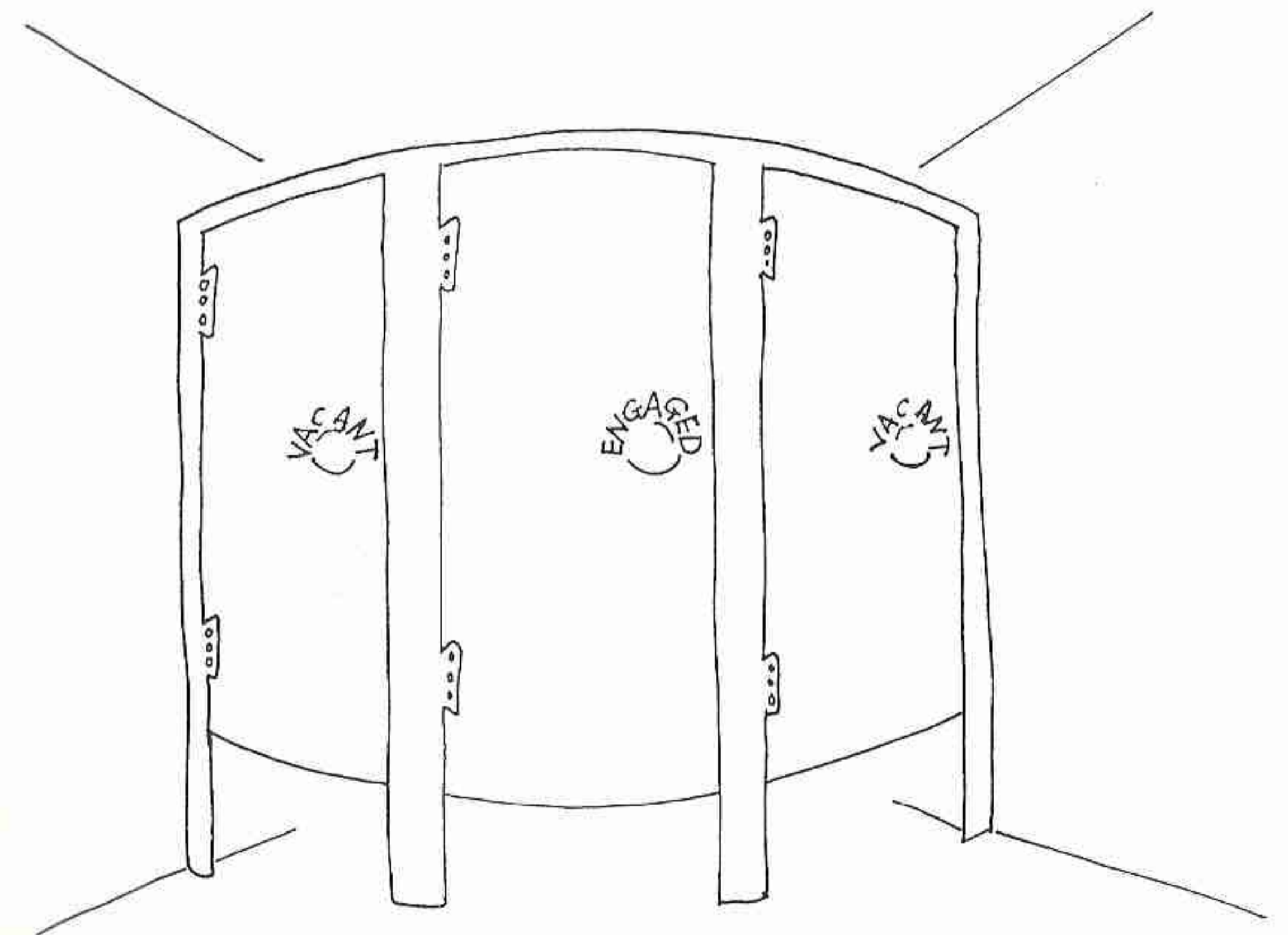
Printed and published by THE QUESTORS LIMITED



THE
QUESTORS
THEATRE

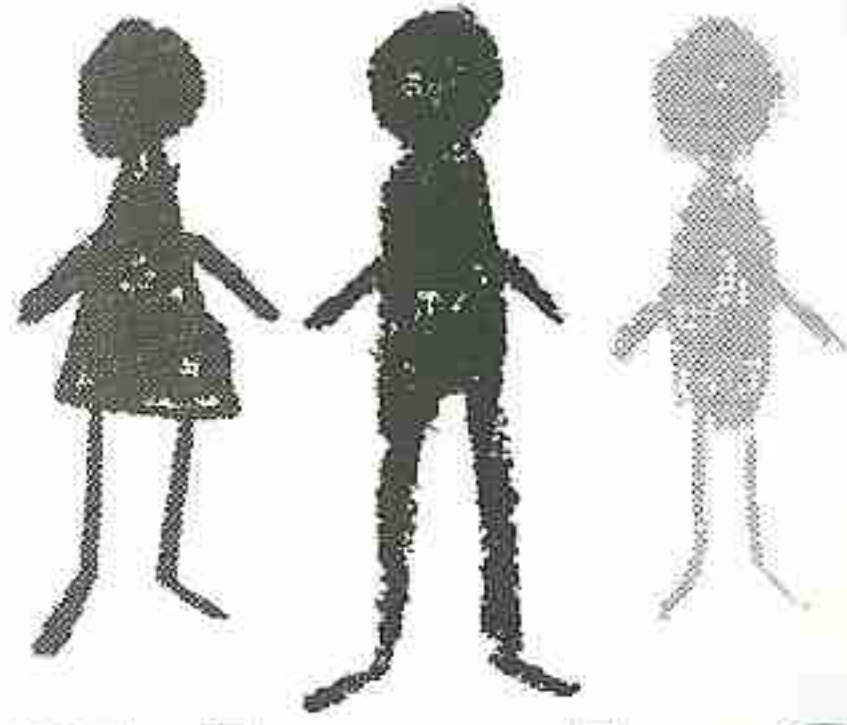
STAGS AND HENS

BY WILLY RUSSELL



sponsored by
LISTER BECK

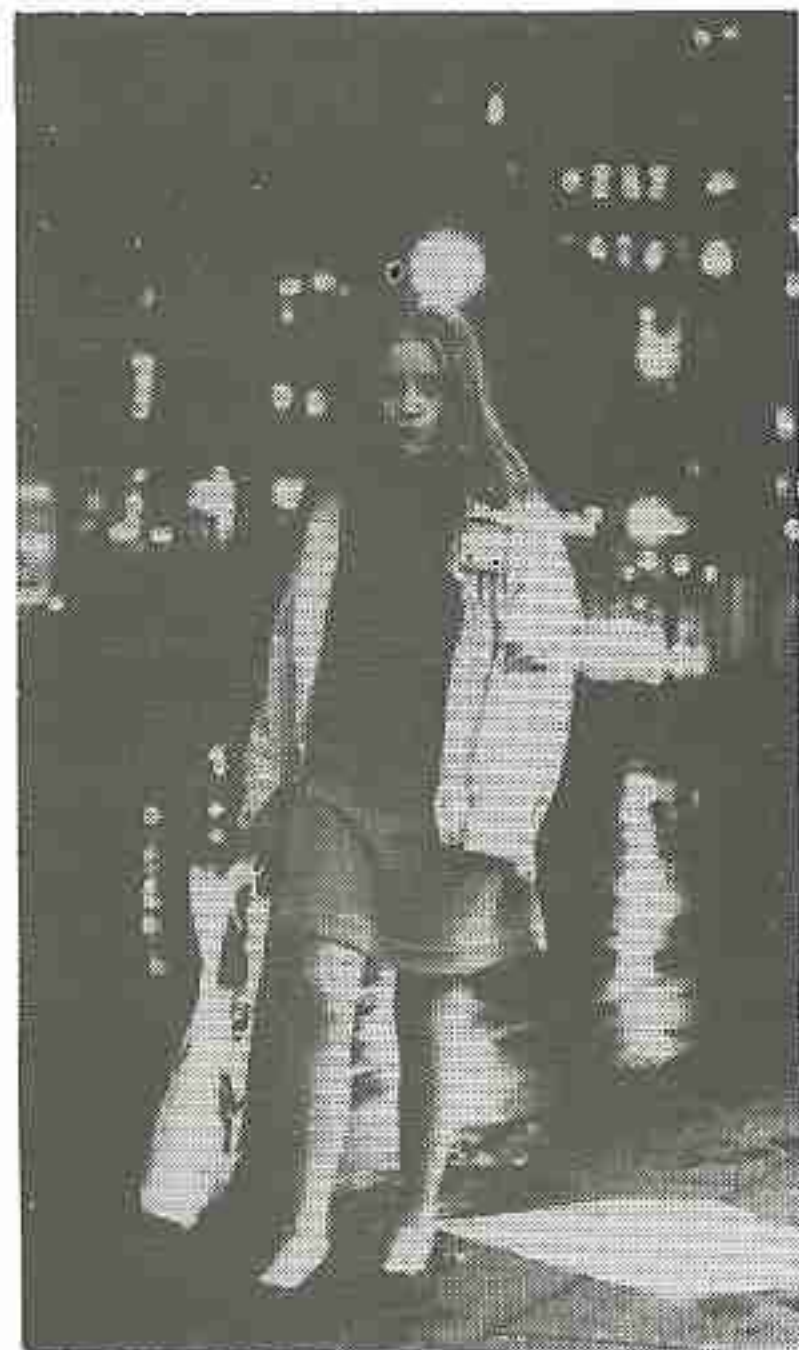
*in memory of Alfred Emmet who was Director of Studies
and Tutor of The Student Group for many years.*



The Children's Society

MAKING LIVES WORTH LIVING

OVER 90,000 YOUNG PEOPLE GO MISSING EACH YEAR



The Children's Society is the only organisation running 'safe houses' for runaways under the age of 17. Our Central London Safe House has helped over 1500 young people and we have just opened a much needed extension to it.

They run away from home or care for many reasons — from family disputes to physical or sexual abuse. A common cause was that no one listened to them. They ran from all sorts of backgrounds. Most return home, but others end up living rough on the streets, prey to abuse and exploitation of the worst possible kind.

The Children's Society's safe houses and related projects offer somewhere they can begin to sort out their lives, somewhere they **will** be listened to and counselled.

Please will you help us guide these young people to make their lives worth living, developing the abilities they were born with for the benefit of their families and communities.

Cash donations should be sent to The Children's Society, Freepost W11 3BR. Gifts of antiques and collectables can be sold by our shop at 129 Pitshanger Lane, W5.

For further information ring Mrs Rhoddy Wood on 071 727 1792.

*This advertisement space has been donated by Mr Lister Beck who is sponsoring **Stags and Hens**.*



Photo by Stephen Hyde

WILLY RUSSELL

Willy was born in 1947 in Whiston near Liverpool. He left school at 15 to become a ladies' hairdresser eventually managing his own shop in Kirby.

Not content with the world of *coiffure*, he left and did a variety of jobs, including stacking stockings in a warehouse at Bear Brand. After a spell as a teacher in Toxteth he became a songwriter.

In 1967 he and his group (the Kirby Town 3) hit the big time and performed on Granada Television, however new influences were beginning to creep in. After seeing John McGrath's play *Untimely Elements*, he decided he wanted to become a playwright. In 1971 *Keep Your Eyes Down* was produced at St Katherine's College, Liverpool. It paved the way for enormous successes like *Breezeblock Park*, *John, Paul, George, Ringo and Bert*, *Educating Rita*, *Shirley Valentine* and of course *Stags and Hens*.

STAGS AND HENS

To some extent *Stags and Hens*, first performed in 1978, is a period piece. This was the last year before the "Thatcher Era", and even Mrs T herself was heard to say that there will "never be a woman Prime Minister in my lifetime". The New Woman was still struggling to take control of her life, while the New Man was vaguely glimpsed in *The Guardian's* Women's page.

The banter exchanged in the seedy disco of *Stags and Hens* is reminiscent of a certain attitude to women and their role in Society. Women were tarts, birds, who were meant to look pretty, but whose opinions were not to be taken seriously. Lip service was paid to women's achievements and abilities and the greatest compliment that a woman could expect was to be called the "power behind the throne".

Just as striking though is the limitation of the stereotyped macho behaviour of the men. Drinking too much, playing footie, chasing tarts and standing by your mates are all acceptable: going to Art School is not. Peer group pressure to conform appears equally in both the male and female groups. Both sets of protagonists seem stuck in their own little ruts dreaming dreams they are unlikely to realise.

Laugh at the characters, but ask yourself if things have really changed that much.

ELAINE MERCER

STAGS AND HENS

by Willy Russell

First performance Saturday 13th July 1991

Cast: in order of appearance

Maureen **BELLE PERERA**
Bernadette **KAREN MARTIN**
Carol **GEORGIA DOBBS**
Francis **SARRAOUNIA HARRIS**
Linda **PAULA DILLON**
Robbie **EDDIE FITZGERALD**
Kav **MICHAEL MOYLAN**
Billy **HUMPH JAMES**
Eddy **MARK FITZGERALD**
Peter **PAUL WHITING**
Roadie **BYRON TODD**
Dave **STEVE EKE**

Production

Director **LYN LANGRIDGE**
Designer **ROB HUGHES**
Lighting Designer **COLIN ABDEY**
Sound by **RICHARD HETHERINGTON**
Costume Designer **SYLVIA WALL**
assisted by **ANDREA FRANKHAM, ELIZABETH PRITCHETT**
Stage Manager **TANIA HORWOOD**
Deputy Stage Manager **ARUNA REDDY-GRAHAM**
Assistant Stage Managers **LYNNE BELL,
EMMA EVANS, ELAINE MERCER**
Properties **JANE MULLOY**
Construction **JOHN ROLFE,
JON WEBSTER, NORMAN HILL, PIERS LANGRIDGE,
BOB HOSKINS, NORMAN BARWICK, ROB HUGHES,
ROGER KLENK, SARAH MINETT, MOIRA MATHEW,
MAURY HORWICH, PATRICIO CORTI, BILL FORSTER,
TONY FITZGERALD**
Lighting Operator **SAM BOWDEN**
assisted by **JAMES ALLISON, BILL FORSTER**
Sound Operator **PETER TOMPKINS**
Prompter **JANE DAVIE**
Sound Researcher **ESTHER HETHERINGTON**
Hair, Make-Up **MARILYN C REEGOR
of GREASEPAINT**

The action takes place inside a dance hall in Liverpool, 1978.

Thanks to **TWYFORDS BATHROOMS** — All Toilet Facilities
ROY BRIERLEY and **TONY FITZGERALD** — Plumbing advice,
THERMALITE — Breezeblocks, **TNT CONTRACT DISTRIBUTION** — Delivery
VISUAL LINE — Fabrics, PVC, Pea Lights
ADRIAN MARCHANT Backdrop Glitter

THERE WILL BE ONE INTERVAL OF FIFTEEN MINUTES

The taking of food and drink into the auditorium is NOT permitted, neither is the use of cameras, video-cameras or tape equipment during the performance.

ART EXHIBITION IN THE UPPER FOYER

13 — 27 July 1991

HALINKA KLECKA

Born in 1967, Walton on Thames, Surrey.

Studied at Chelsea College of Art.

Media: mainly oils and black and white drawings.

Started professional painting when 17.

Commissioned for graphic design and posters by Pro Arte Theatre, London.

Her oil painting *Christmas Tree* was adapted and used as a Christmas card in 1990 by Medical Aid for Poland.

At the moment she mainly concentrates on large oil paintings; in series of six, each expressing four seasons of the year, and in semi-abstract Still Lives.

She is preparing a one person exhibition in the Polish Cultural Centre Gallery, London which will be held in July 1992.

Her paintings are exceptionally dynamic with strong, positive, well balanced contrasting colours.

Recent work can be found in several private collections in the U.K. and abroad.

Le Phénicien

A new fully licensed French Restaurant

Charmingly located overlooking Haven Green, with parking facilities nearby. It stands directly opposite Ealing Broadway Tube Station. Le Phénicien offers authentic French cuisine prepared by one of London's top French Chefs. The wine cellar is well stocked with the vintages imported from the best regions of France. Soft piano music played three evenings a week adds to the Restaurant's charming and relaxed atmosphere. An ideal venue for parties or quite simply for those who enjoy good food and fine wines. On your first visit all members of The Questors are entitled to a free bottle of wine from our selected wine list on presentation of this programme.

Opening times: Lunch 12.00 - 14.30 (Last orders)
Dinner 18.30 - 23.00 (Last orders)

Telephone: 081-567 1111 or 567 6297

Le Phénicien, 9/10 Central Buildings, Haven Green, W5

INFORMATION

THE GRAPEVINE CLUB

The Questors has a fully licensed Bar which is now open to all members. The Bar is open every evening plus lunchtimes on Sundays. Questors members are requested to sign in their guests when entering the bar.

THE HOTPLATE

Delicious hot and cold food is available in the upper Foyer between 6.30pm and 8.00pm during the run of Playhouse productions, and coffee, tea, and cakes are served during the interval. No hot food will be provided at the Sunday matinées.

NOTE

The Hotplate is not open for Studio productions, but when Studio performances coincide with those in the Playhouse, it will endeavour to serve those audiences whenever this is possible.

NEW MEMBERS EVENINGS

Why not attend one of our new, or prospective members evenings, and have a conducted tour of the Theatre complex. Tours start and finish at the Grapevine Bar, 8.00pm every Wednesday.

THE STUDENT GROUP

The Questors runs a two year part time student course in Acting; details can be obtained from the office.

YOUNG PEOPLE'S GROUPS

There are a number of groups for younger members. These cater for all age groups, from 5-17. The classes are intended to create awareness of the theatre and provide a stimulating channel for imagination.

For The Questors Theatre

Artistic Director	David Emmet
Studio Directors	Paddy O'Connor, John Horwood
Director of Studies	David Emmet
Chairman	Martin Bowley
Vice-Chairman	Doug King
Secretary	Fiona Nicholson
Finance Director	Ken Kettle
Administrative Director	Jim Craddock
Stage Director	Steve Anderson
Theatre Manager	Elaine Orchard
Productions Administrator	Jill Gee
Membership Secretary	Alice Pennicott
Programme Editor	Ken Ratcliffe
Questopics Editor	Barbara Neville
Press Officer	Sam Jennings
Sponsorship	Geoffrey Sellman
Box Office Manager	Ken Parker
Programme Sales Organiser	Val Blaxland
Marketing Manager	Robert Gordon Clark
Hotplate	Dorothy Dent
Floral displays	Barralets of Ealing
Haberdashery	Tootal Craft
Wardrobe Equip.	Wilkinson Sword Scissors . . Fiskars Ltd
Wardrobe Care	Persil and Comfort courtesy of Lever Bros.
	Dry-cleaning by C.D.S.

ADMINISTRATION

The Questors office is open from 9.30am until 5.00pm every weekday. If you wish to make contact for details of membership, or hiring the Theatre and rehearsal rooms, telephone the office on 081-567 0011.

MEMBERSHIP

If you wish to become a member please fill in the application form (copies in the Foyers); just send it to the Theatre with the appropriate subscription.

BOX OFFICE

For personal callers the box office is open evenings only from 6.45pm to 8.30pm on days of performance and five days prior to each Playhouse production.