

FORTHCOMING EVENTS

NEW PLAYS FOR A NEW DECADE

In the Studio

THE HOUSE OF YES

by Wendy Macleod

Described by the author as 'a suburban Jacobean play', but the setting is modern America.

26, 27, 29, 30, 31 May, 1, 2 June at 7.45pm

AND

In the Playhouse

HELLO PARIS

by Sebastian Baczkiewicz

A new play by the author of *Harry* and *The Man Who Shot the Tiger*. Offbeat, witty and resonant in style.

2, 5, 6, 8, 9 June at 7.45pm
Sunday 3 June matinée at 3pm

In the Upper Foyer

REHEARSED READING

THE MAKING OF MOO

by Nigel Dennis

Sunday 27 May at 7.45pm

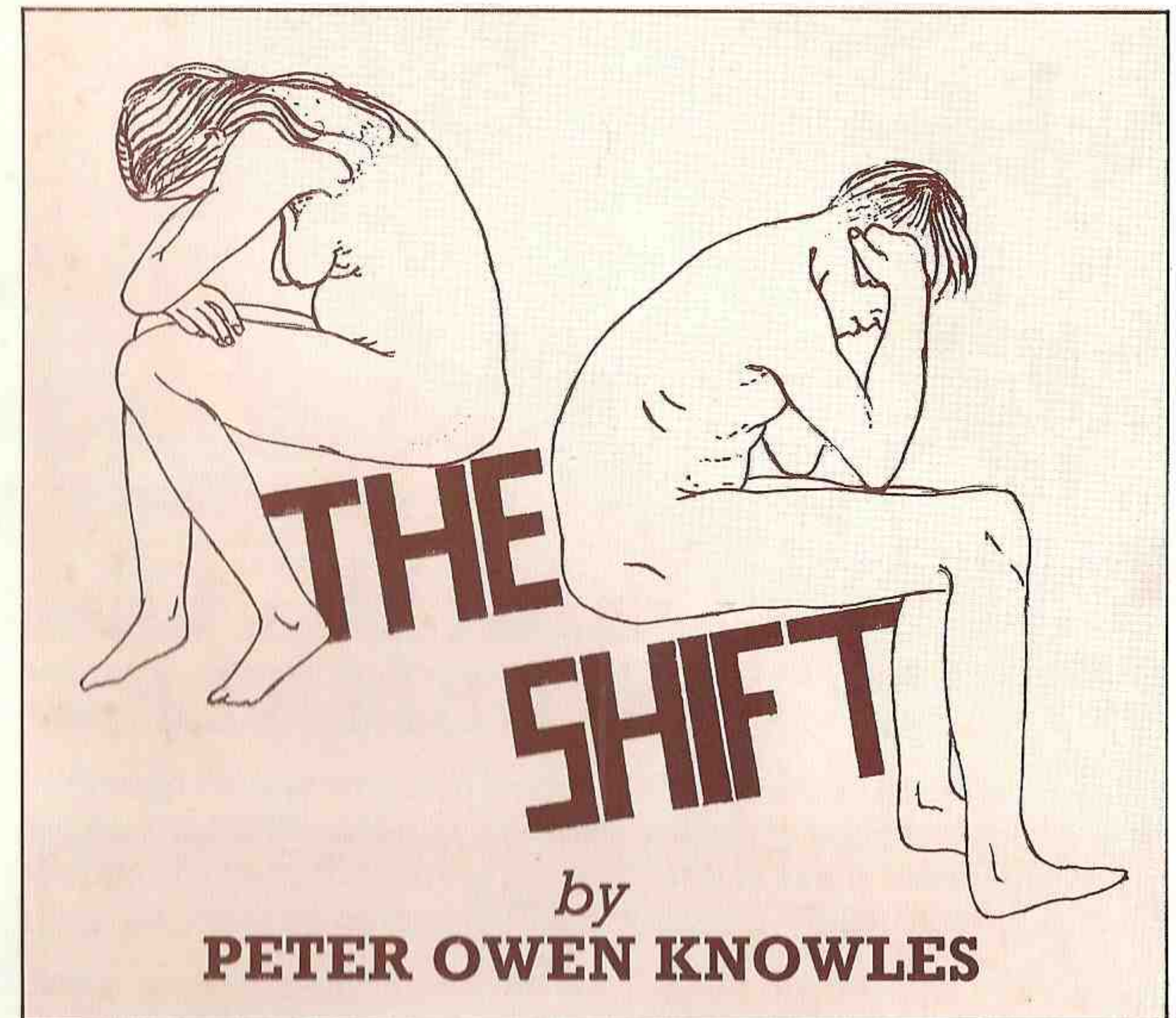
Admission FREE to Members and Guests

Printed and published by THE QUESTORS LIMITED

 THE QUESTORS THEATRE

WINNER OF
THE STUDENT PLAYWRITING COMPETITION

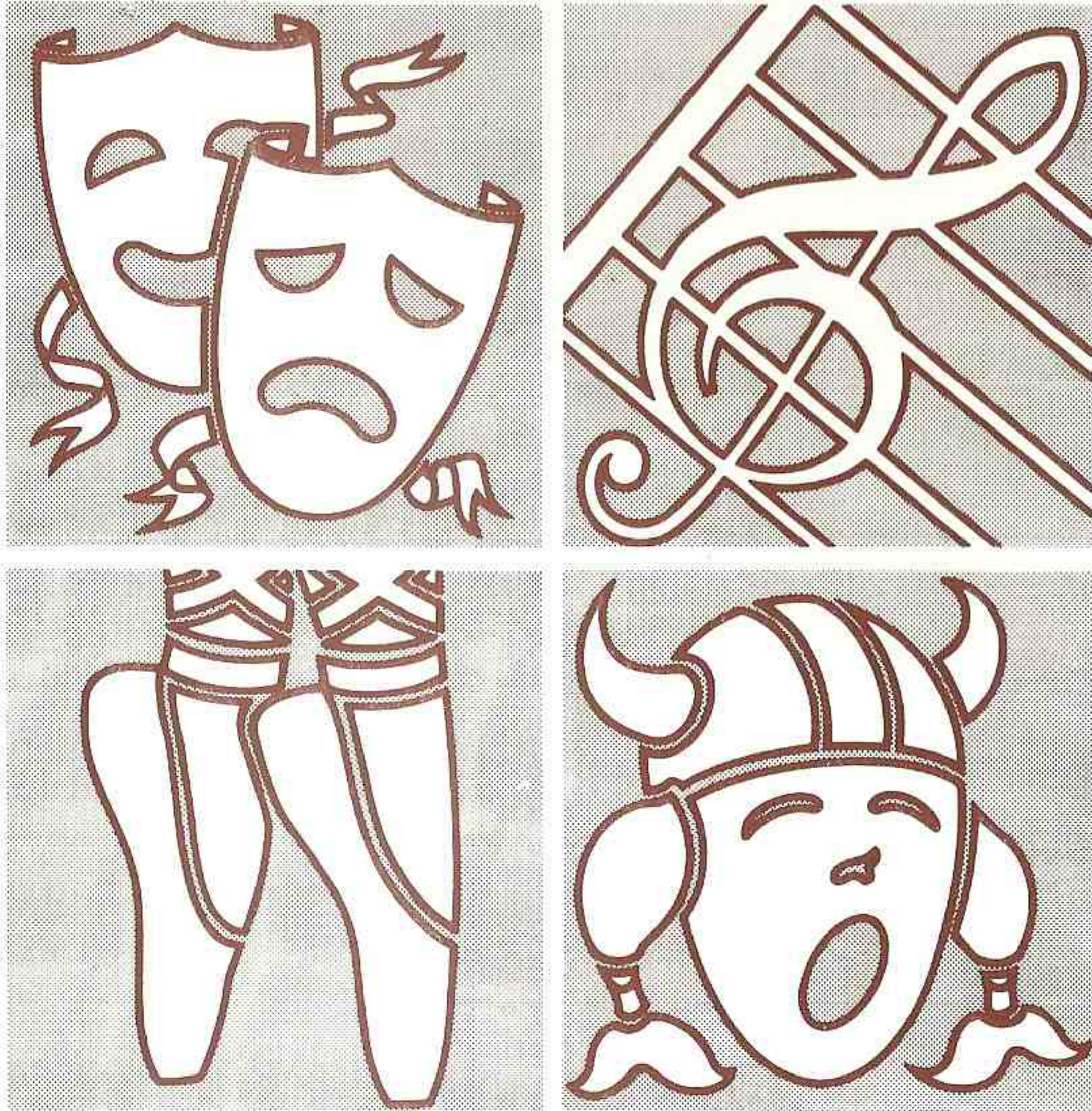
NEW PLAYS for a NEW DECADE



Sponsored by

 The Royal Bank
of Scotland

Banking Services

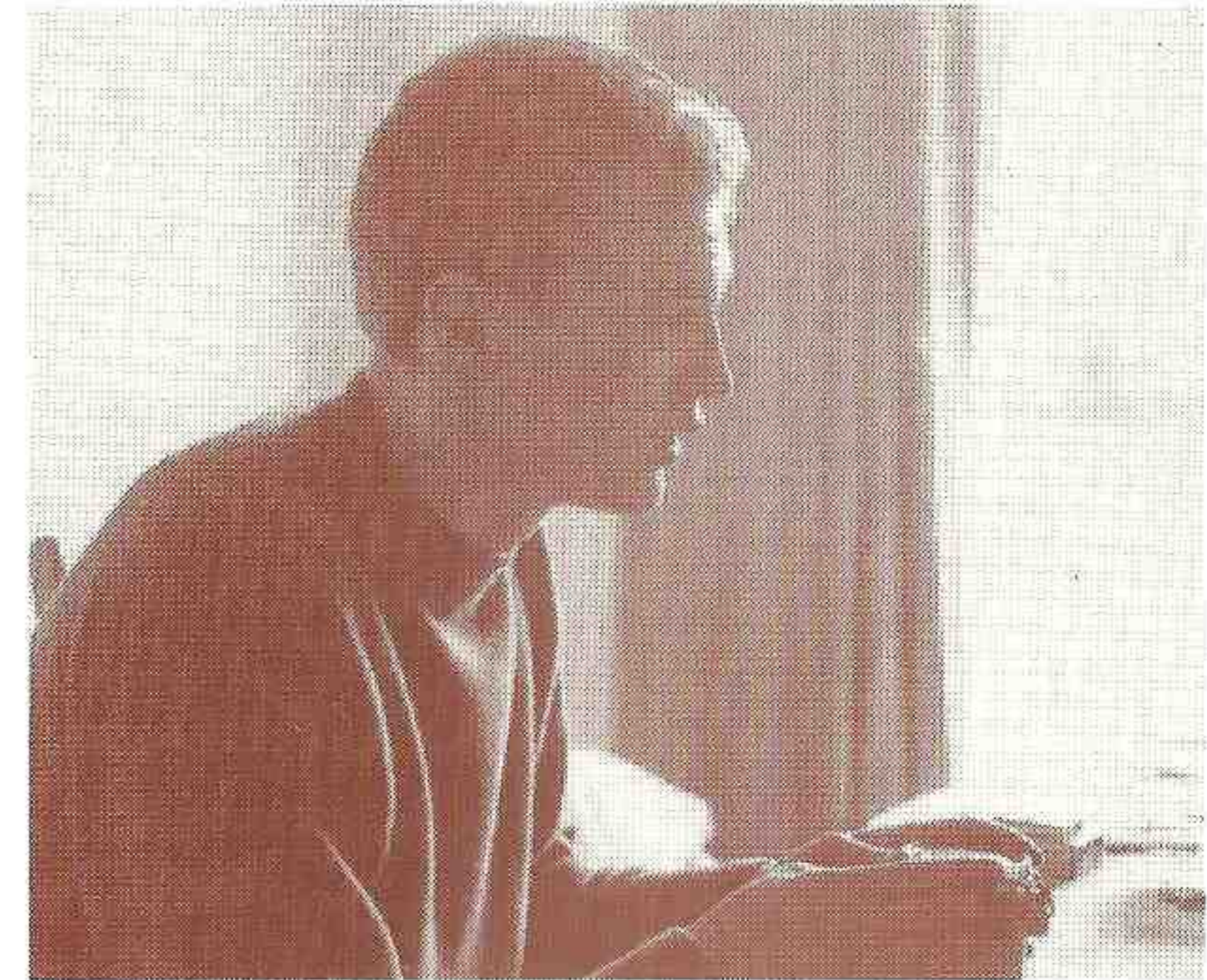


PERFORMING ON
YOUR BEHALF



The Royal Bank of Scotland plc

THE AUTHOR



“ The Shift is a play about men. The narrative detail of the piece is completely true. The men had no recourse to their Union because there was no Union. This is inevitable when in its collective sense society is dying. To some this means far more than to others.

The play is dedicated to my father and my grandfather. ”

Peter Owen Knowles

The winner of the 1989 Student Playwriting Competition, is currently taking a degree in English at St. David's University College at Lampeter in West Wales.

Although he has written a number of short plays and sketches for Studio Drama Workshops, *The Shift* is his first full-length play. It was written specially for entry in the competition and is based on his personal experience of working shift-work in a Welsh factory.

Peter is principally interested in acting. He lists his hobbies as motor-cycling, gardening, cooking and reading and his influences as the contemporary writer Hanif Kureishi (the translator of our recent production of *Mother Courage*) and the singer song-writer Bob Dylan.

THE SHIFT

by Peter Owen Knowles

First performance Saturday 5th May 1990

Cast in order of their appearance

Peter Kirk	PAUL MOREL
Maggie	DEBORAH ECKMAN
Gareth James	ROGER LEWIS
Richard Lloyd	ALAN KILBEY
Aubrey Jones	JOHN DOWNS
Nöel Evans	HOWARD BENBROOK
Adrian Davies	STEPHEN O'TOOLE
Paul Blaine	GEOFF WEBB
Tony Blake	PAUL WHITING
Mikey Bailey	DAVID WHEATLEY
Mam Evans	ANNE GERRARD

*The action takes place in and around a factory
situated in Wales.*

Director/Designer	JOHN HORWOOD
Designer/Costume designer	TESSA CURTIS
Properties	JENNY RICHARDSON KATHERINE MAHONY
Lighting and Sound designer	ALAN N. SMITH

There will be one interval of fifteen minutes.

Production

Stage Manager	GORDON MILLER
Deputy Stage Manager	TRISH KNIGHT
Assistant Stage Managers	JAYNE HOPKINSON RICHARD MATTHEWS AOIFE MURPHY AMANDA RAY JESSICA SQUIRES JULIET STRANG
Wardrobe Staff	ANNE GILMOUR HAZEL NUNN
Sound Operator	JAN WAWRZYNOWICZ
Lighting Operator	ANNE RICE
Machine Construction	NORMAN HILL
Set Contruction	JIM CRADDOCK WYN EVANS TINA HARRIS NORMAN HILL BRINLEY PARSONAGE CHRUS SYDENHAM
Set Painters	BRAD ASKEW JACKIE DOVER WYN EVANS
Dialect Coach	Andrew Jack
Dialect Advisor	LYN LANGRIDGE

THANKS TO **ROY BRIERLEY
ARTISANS INDUSTRIAL SERVICES LTD (PARK ROYAL) FOR
SUPPLYING OVERALLS.
PALADIN PLASTICS OF EALING FOR PLASTIC PIPING.**

IN THE UPPER FOYER

After tonight's performance of *The Shift* (not the 'Matinée) an opportunity to see a Promenade production of the runner-up in the 1990 Student Playwriting Competition

EVE by Ali Davenport

Eve **MARY DAVIES**
Adam **ROBIN INGRAM**
The Devil **DAVID SLOTTVED**

Director **LYN LANGRIDGE**
Stage Management **EDDIE CULLEN**

The performance will commence at approximately 10.30pm and lasts approximately 15 minutes.

ART EXHIBITION IN THE UPPER FOYER

HARRIET BOWES

Harriet is a member of The Questors working as a set and costume designer. Professionally she works as an interior designer.

Her collection of prints in the exhibition covers the past ten years: her most recent work being inspired by Dante's *Divine Comedy* — *The Inferno*. The method of screen printing is controlled and precise whereas the monoprints are the distinct opposite: the 'mistakes' often becoming the most interesting. The monoprints are all one-offs but a number of the screen prints have the same image.

There is also an exhibition of water-colours by the same artist in The Grapevine Bar.

INFORMATION

THE GRAPEVINE CLUB

The Questors has a fully licensed Bar which is now open to all members. The Bar is open every evening plus lunchtimes on Sundays. Questors members are requested to sign in their guests when entering the bar.

THE HOTPLATE

Delicious hot and cold food is available in the upper Foyer between 6.30pm and 8.00pm during the run of Playhouse productions, and coffee, tea, and cakes are served during the interval. No hot food will be provided at the Sunday matinées.

NOTE

The Hotplate is not open for Studio productions, but when Studio performances coincide with those in the Playhouse, it will endeavour to serve those audiences whenever this is possible.

NEW MEMBERS EVENINGS

Why not attend one of our new, or prospective members evenings, and have a conducted tour of the Theatre complex. Tours start and finish at the Grapevine Bar, 8.00pm every Wednesday.

THE STUDENT GROUP

The Questors runs a two year part time student course in Acting; details can be obtained from the office.

YOUNG PEOPLE'S GROUPS

There are a number of groups for younger members. These cater for all age groups, from 5-17. The classes are intended to create awareness of the theatre and provide a stimulating channel for imagination.

For The Questors Theatre

Artistic Director
Studio Director
Director of Studies
Chairman
Vice-Chairman
Secretary
Finance Director
Administrative Director
Stage Director
Theatre Manager
Productions Administrator
Membership Secretary
Publicity Manager
Programme Editor
Questopics Editor
Press Officer
Sponsorship
Box Office Manager
Front of House Manager
Hotplate
Floral displays
Haberdashery
Wardrobe Equipment
Wardrobe Care

David Emmet
Paddy O'Connor
David Emmet
Martin Bowley
Roger Kelly
Fiona Nicholson
Ken Kettle
Lucille Terry
Steve Anderson
Elaine Orchard
Jill Gee
Lindsay Udell
Eric Lister
Ken Ratcliffe
Gwenan Evans
Simon Higginson
Geoffrey Sellman
Ken Parker
Douglas Thomas
Dorothy Dent
Barralets of Ealing
Gütermann
Wilkinson Sword
Persil and Comfort
courtesy of Lever Brothers.

ADMINISTRATION

The Questors office is open from 9.30am until 5.00pm every weekday. If you wish to make contact for details of membership, or hiring the Theatre and rehearsal rooms, telephone the office on 01-567 0011.

MEMBERSHIP

If you wish to become a member please fill in the application form (copies in the Foyers); just send it to the Theatre with the appropriate subscription.

BOX OFFICE

For personal callers the box office is open evenings only from 6.45pm to 8.45pm on days of performance and five days prior to each Playhouse production.