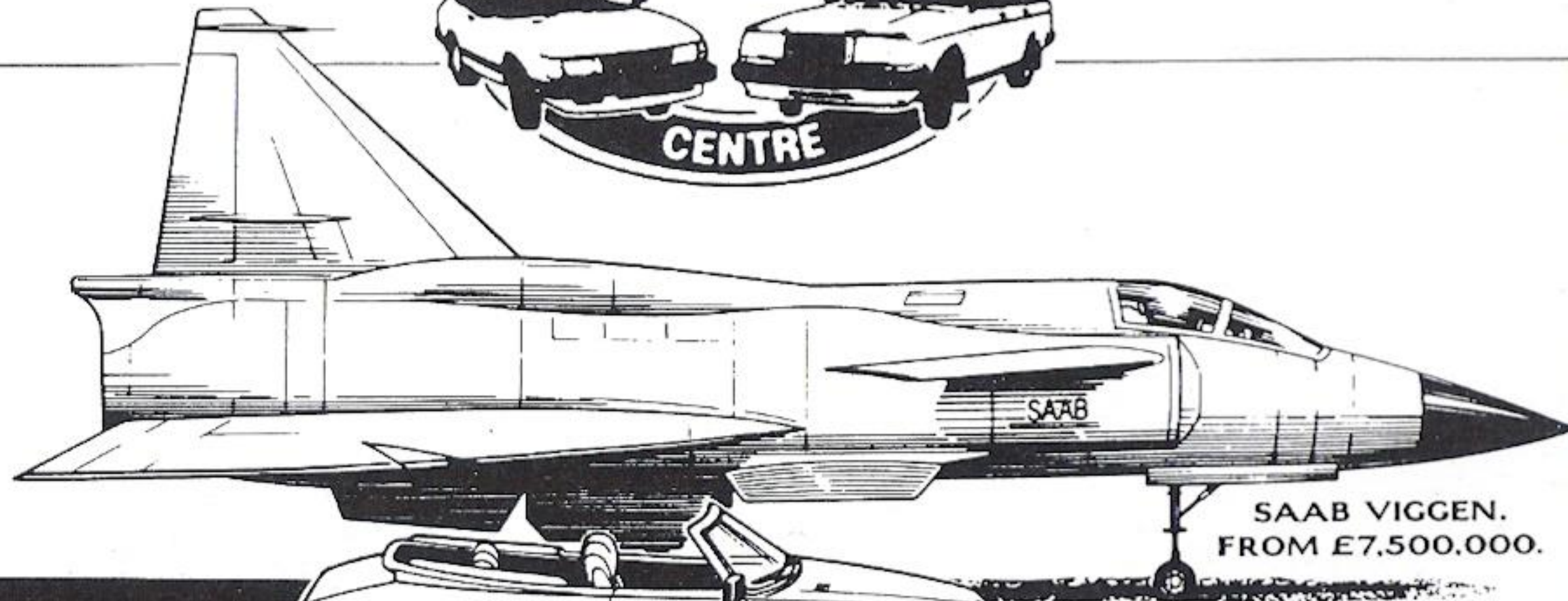


# The Swedish Car Centre



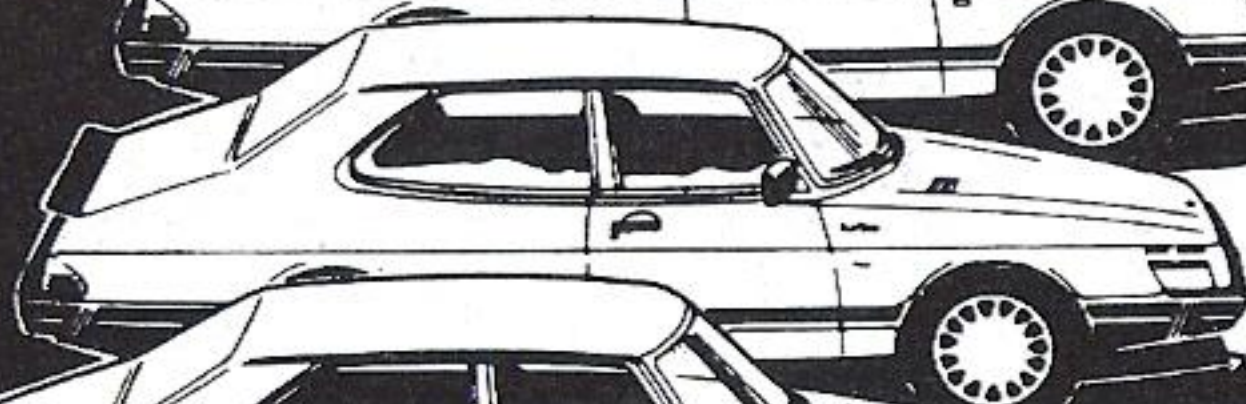
SAAB VIGGEN.  
FROM £7,500,000.



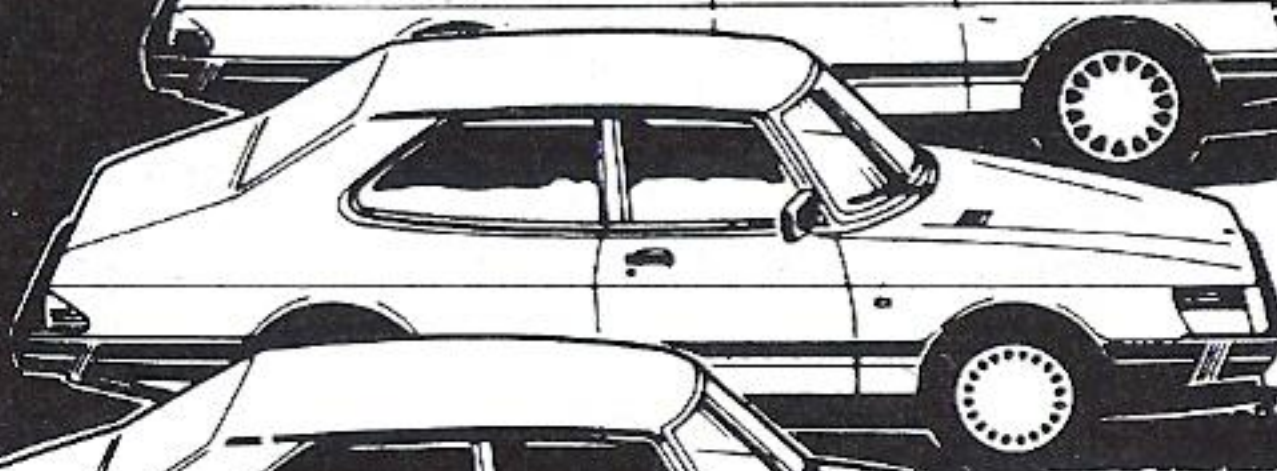
SAAB 900 CABRIOLET.  
FROM £23,495.



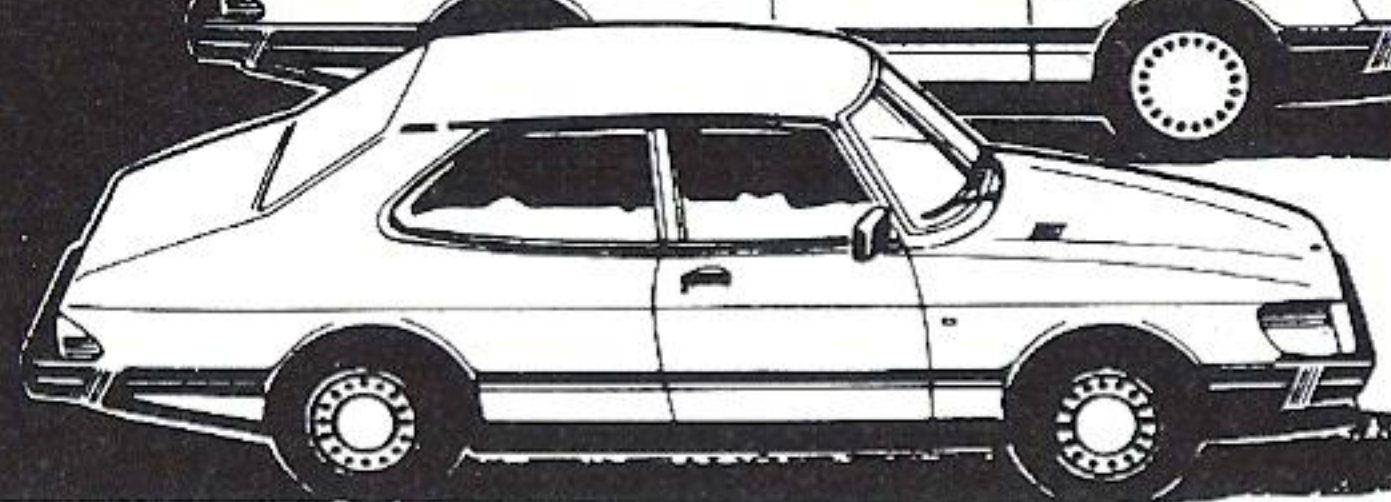
SAAB 900 TURBO 16.  
FROM £14,995.



SAAB 900 TURBO 8  
FROM £12,995.



SAAB 900i  
FROM £10,495.



SAAB 900.  
FROM £9,495.

HOW MUCH DOES IT TAKE TO JOIN THE JET-SET?

Swedish Car Centre  
128 Boston Road  
Hanwell, London  
W7 2HJ



01-567-7035/6521

*To arrange a test flight  
in a New or Quality  
Checked Used Car made  
by a plane maker simply  
call us.  
(For a test flight in the  
plane we suggest the  
Swedish Air Force!)*



S  
A  
A  
B  
T  
H  
E  
A  
I  
R  
C  
R  
A  
F  
T  
M  
A  
N  
U  
F  
A  
C  
T  
U  
R  
E  
R

THE QUESTORS THEATRE

# BENEFACTORS

by michael frayn



sponsored by

Midland Bank plc



Prices quoted for models shown incl. front and rear seat belts, car tax and VAT, but excl. delivery, road fund licence and number plates. 2, 3, 4, and 5 door models available.

ESTATE  
AGENTS AND  
SURVEYORS

**SINTON  
ANDREWS**

01-840 5151

215  
UXBRIDGE ROAD  
EALING  
W13 9AA

### CASTLEBAR AREA

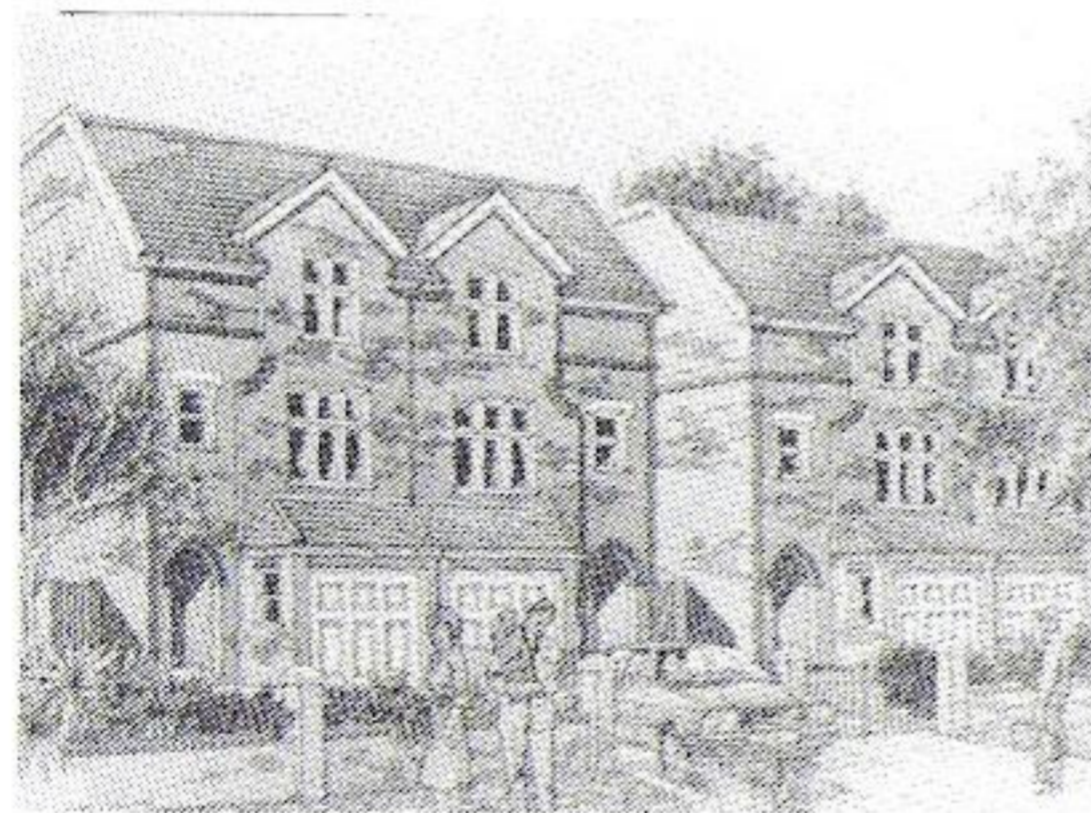


A splendid double fronted family semi detached house displaying a wealth of character. Sympathetically updated and situated in this quiet and popular avenue in one of Ealings very best locations.

Vestibule reception hall, cloakroom, three reception rooms, kitchen. Five bedrooms (all double bedrooms) two bathrooms. Gas central heating. South facing garden.

**£355,000 FREEHOLD**

### WOODVILLE ROAD



A choice development of just four semi detached houses now under construction by St. George Plc. An unrivalled position just off Haven Green only moments from the centre of Ealing Broadway. Each with — Entrance hall, cloakroom, family kitchen/dining room, large lounge, master bedroom with en suite bathroom, guest bedroom with en suite shower room, two further bedrooms, family bathroom. Gas central heating. Good sized gardens with patios.

**From £315,000 FREEHOLD**

**SOLE AGENTS**

ALSO AT 176 KING STREET HAMMERSMITH  
LONDON W6 0RA TELEPHONE: 01-846 9611

SURVEY, PROFESSIONAL AND INVESTMENT DEPARTMENT  
TELEPHONE: 01-579 5747 FACSIMILE: 01-840 3340

# Make someone happy

**Call us up or call in – your local British Telecom Shop is just around the corner, providing all the information you need to make the most of all the latest in communications.**

Whatever your needs, be it a stylish addition to your home or an efficient phone system for the office, British Telecom's friendly, expert staff are on hand to advise. And isn't it convenient to know that you can pay your phone bills there at the same time?

Call in and see us today and find out how together we can make technology work for you.



British  
**TELECOM**  
*SHOP*

**It's you we answer to.**

**British Telecom Shop and Business Communications Centre,**  
The Broadway Centre, Uxbridge Road, Ealing, London W5 5JY.  
Tel: 01-456-8222

The Chartered Society of Physiotherapy

**THE EALING  
PHYSIOTHERAPY CLINIC**

(Staffed by chartered physiotherapist)

186 Pitshanger Lane

Ealing, London W5

Tel: 01-997 4852

Clinic hours by appointment

The Organisation of Chartered  
Physiotherapists in Private Practice.

A COMPLETE RANGE  
OF TREATMENTS  
AVAILABLE ON  
REQUEST.

EASILY ACCESSIBLE  
BY E2 BUS.

**EALING DANCE CENTRE**  
*Theatrical Suppliers &  
Fitness and Dance Studio*

An Aladdin's Cave of Costume and Dance-wear, Specialist  
Shoes and Make-up for the professional look in Dance and  
Drama.

Masks and Hats; Glitter and Glitz; Feathers and Flowers; Beads and Bangles;  
Baubles and Bows; Belts and Sashes; Lace and Ribbons; Leichner and Bob Kelly  
stage make-up — create your face here!!

Leotards and Catsuits; Body Warmers and Legwarmers; Romantic Skirts and Character  
Skirts; Petticoats and Tutu's Parisienne and Romantic — adorn your body here!!

Designer Tights and Stockings; Stirrup and Footless Tights in Lycra and Cotton;  
Ballet Tights for men and women; Fishnet Tights and Opera hose — dress your legs here!!

Ballroom Shoes and Latin Sandals; Jazz Shoes and Boots; Pointe Shoes and Delcos;  
Ballet Shoes in Leather and Satin; Tap Shoes and Highland Shoes; Greek Shoes and  
Irish Shoes — fit your feet here!!

**AND . . . . . Exciting Leisure gear for everyone — no matter age, shape or size**

96-98 Pitshanger Lane, Ealing, London W5 1QX

E2 Bus Stops Outside. For Studio Time Sheet 'phone: 01-998 2283



**BUYING OR SELLING PROPERTY — CONTACT US!**



WE ARE HAPPY TO HELP WITH EVERY LEGAL PROBLEM HOWEVER LARGE OR SMALL

- CONVEYANCING • DIVORCE • WILLS & PROBATE •
- BUSINESS & COMMERCIAL PROBLEMS • LANDLORD & TENANT PROBLEMS •
- FAMILY MATTERS •

WRITTEN ESTIMATES ON REQUEST



**KEITH HALL JUVILER & CO. SOLICITORS**

01-997 4485

41 HAVEN GREEN, EALING  
LONDON W5 2NX.

01-578 3133

422 GREENFORD ROAD,  
GREENFORD, MIDDLESEX UB6 9AG

01-840 2572

158 THE BROADWAY,  
WEST EALING, LONDON W13 0TL

翡翠



FULLY LICENSED

**new leaf**

35 BOND STREET, EALING, LONDON W5

Telephone: 01 567 2343

and 01 567 0525

Opening Hours: 12-2.30pm and 6-11.45pm

We at the Midland, as Bankers to The Questors Theatre, are pleased to have the opportunity once again to sponsor a Questors production. We wish the company much success with *Benefactors* and can assure them that we shall not only be "Listening" but watching!



**MIDLAND**

*The Listening Bank*

MIDLAND BANK PLC 1988



# THE QUESTORS THEATRE

MATTOCK LANE, EALING, LONDON W5 5BQ. TELEPHONE 01-567 0011

President: Dame Judi Dench  
Vice Presidents: Sir Brian Batsford, Alfred Emmet, OBE, Roger Rees, Michael Williams  
Theatre Manager: Elaine Orchard

FIRST PERFORMANCE 17th SEPTEMBER 1988

The Questors Presents

## BENEFACTORS

by  
Michael Frayn

Directed by **John Horwood**  
Designed by **John Horwood** and **Tessa Curtis**  
Lighting Designed by **Tim Hayward**  
Sound Designed by **Gabriel Farrell**

A *JGP*  
John Good  
Programme

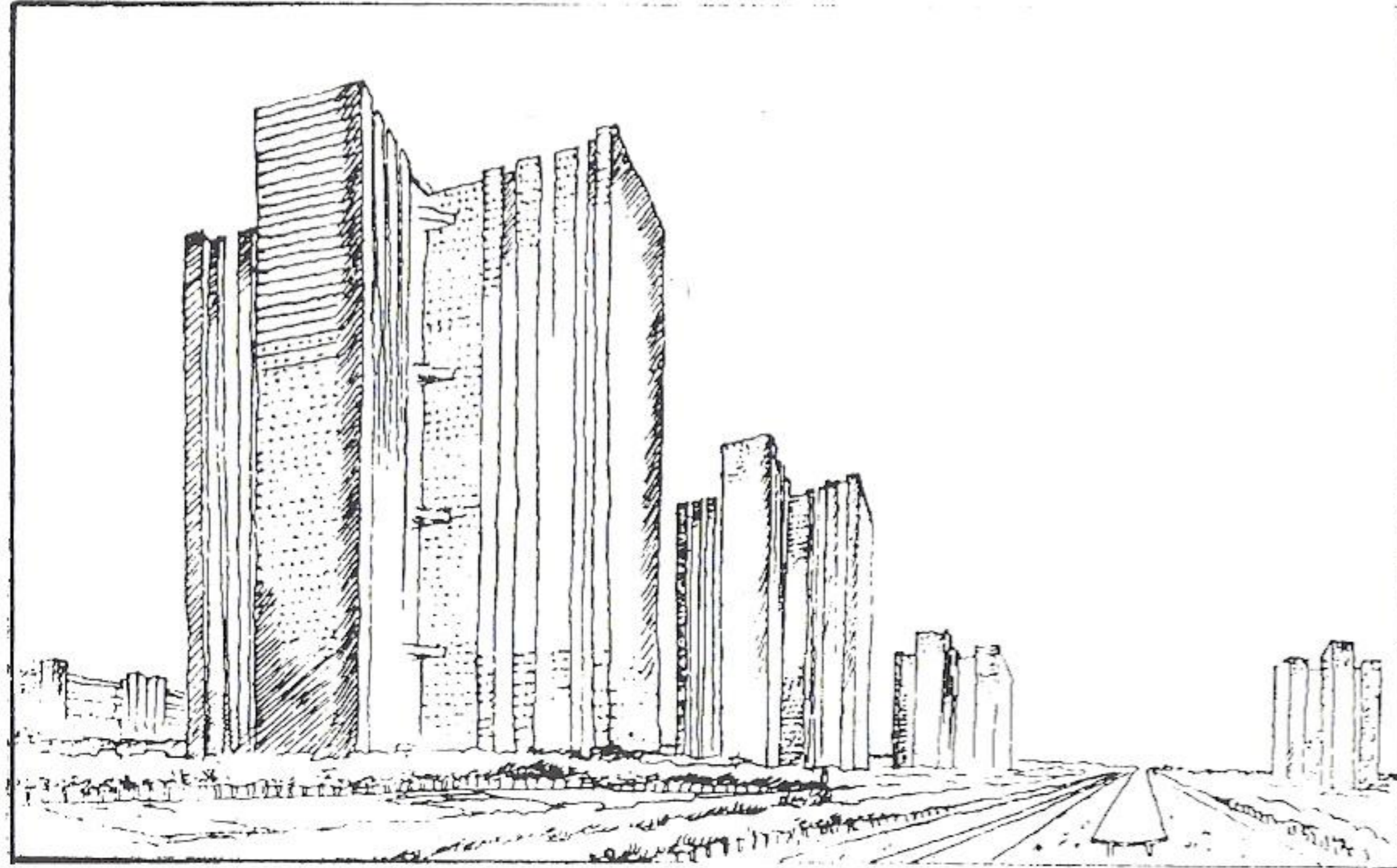
Sponsored by  
Midland Bank Plc.



---

## TOWER BLOCKS

“What gives our dreams their daring is that they can be realised” — Le Corbusier



Le Corbusier's 'City of Towers' from Vers Une Architecture, 1923. Sixty storey housing blocks set in a parkland of trees. These enormous structures were designed to rest on four storey legs so that the landscape could be seen to flow through and under them.

“I live with my wife in a GLC tower block. This is situated at the intersection of two motorways: The Westway and the M41. The noise is sickening, it is impossible to read, think or listen to music. We sleep fitfully and wake with a huge din of traffic in our heads. Our air is contaminated with fumes and lead. These conditions are the result of GLC planning. Our block, which is similar to many others in this area, was consciously planned and built with foreseeable results: specified, that is, as uninhabitable. I must confess that the vandalism which is slowly eating away this particular estate elates rather than

---

horrifies us. If to destroy this place is some sort of crime, to have built them is worse. . . . Factory farms for psychosis and barbarity”

Letter to the Times 1978

“We are approaching a state of technical proficiency when it will become possible to rationalise buildings and mass produce them in factories by resolving their structure into a number of component parts. Like boxes of toy bricks they will be assembled in various formal compositions.

Walter Gropius”

### SYMBOL OF COLLAPSE

In 1968, Ronan Point, a prefabricated, multi storey housing block made of slabs of concrete, walls and floors stacked together like a house of cards, progressively collapsed when a gas explosion at a high level blew out an external wall. Five people died and two hundred people were made homeless.

“Starting from the fourteenth floor you would have absolute calm and the purest air”

Le Corbusier

“. . . Has it ever occurred to you how miserable it must be never to hear the song of a bird or the waving of leaves on a tree because there, twenty storeys high, no birds sing and no trees reach . . . . YOURS WAS THE HAND THAT SIGNED THE PAPER THAT FELLED A CITY.”

George Tremlett,

Chairman of the GLC Housing Committee, Address to RIBA Conference 1978

---

---

## CAST

In order of appearance

David	<b>Robin Ingram</b>
Jane	<b>Fiona Nicholson</b>
Colin	<b>John Downs</b>
Sheila	<b>Ceri Jones</b>

---

THERE WILL BE ONE INTERVAL OF 15 MINUTES

---

Director	<b>John Horwood</b>
Designers	<b>John Horwood and Tessa Curtis</b>
Lighting Designer	<b>Tim Hayward</b>
Sound Designer	<b>Gabriel Farrell</b>

Wardrobe	SARAH ANDREWS
Properties	LESLEY HARRIS GLYN BACKSHALL
Lighting Operators	MURRAY ARMES ADRIAN DEWEY
Stage Manager	LUCILLE TERRY
Deputy Stage Manager	DEBBIE WARD
Assistant Stage Managers	SARAH BELLIS-JONES SALLIE CLEMENT SUSANNA FYSON SUSAN JAGGER PENNY SIMMS ROBERT WINTER DAVID LILLIE
Prompt	CLAIRE BROUGHTON
Construction	PETER TERRY
Architectural Adviser	WILLIAM BATES
Thanks to:	BENTALLS SCENE 2 RICHARD HETHERINGTON PAUL MOREL TANYA SCOTT-WILSON

---

---

---

## Michael Frayn

Michael Frayn was born in London on the 8th September 1933. He went to Kingston Grammar School, Surrey and then to Emmanuel College Cambridge. In 1957 he served in the Royal Artillery and Intelligence Corps. He joined the Guardian in 1957 as a reporter and columnist moving to the Observer in 1963, where he wrote a regular column until 1968. He still contributes features to the Observer on foreign countries, among them Cuba, Israel, Japan and Sweden. He has published five novels but it is for his plays that he is best known, together with his highly successful translations of Chekhov. He is married to Gillian Parker and has three children.

### Novels

The Tin Men 1965  
The Russian Interpreter 1966  
Towards the End of the Morning 1967  
A Very Private Life 1968  
Sweet Dreams 1974

### Plays

Zounds! 1957  
The Two of Us 1970  
The Sandboy 1971  
Alphabetical Order 1975  
Donkeys Years 1976  
Clouds 1976  
Liberty Hall 1980  
Make and Break 1980  
The Cherry Orchard (translation) 1980  
Wild Honey (translation) 1984  
Benefactors 1984  
Uncle Vanya (adaptation) 1987  
The Fruits of Enlightenment (Tolstoy translation)

---

---

### Television Plays

Jamie on a Flying Visit 1968  
Birthday 1969  
Making Faces 1975

### Awards

Alphabetical Order was awarded the Evening Standard Best Comedy Award in 1975.  
Donkeys Years was awarded the S.W.E.T. Best Comedy Award 1976  
Maughan Award 1966  
Hawthorden Prize for Fiction 1967  
Evening Standard Award 1976  
The Olivier Award 1985

---

---

  
THE QUESTORS THEATRE

---

**EXHIBITION**

---

**IN THE FOYER**

17th SEPTEMBER — 24th SEPTEMBER

**AN EXHIBITION OF PAINTINGS**

by

**MARGARET SAMS**

Margaret Sams was born in Nebraska, USA. She has lived in France and Germany for a few years, but has spent 35 years in London. She has studied art in Los Angeles, Wiesbaden, Omaha and London. Her paintings have been exhibited in U.S. Officers Clubs in various countries. For the past two years her work has been exhibiting in a St. Louis Art Gallery. She finds greatest pleasure doing still life.

---

**PLAY READINGS**

An exciting programme of new and rarely performed plays is planned for the 1988—1989 season.

The first two readings will be:

October 2nd

October 9th

At 7.45 pm in the Foyer

Admission will be free, and refreshments will be available

  
THE QUESTORS THEATRE

---

**COMING EVENTS**

---

IN THE PLAYHOUSE

**TAKING STEPS**

by Alan Ayckbourn

8th—15th October at 7.45pm and 9th October at 3.00pm

Tickets: Members and Guests £3.00 and £3.50

---

**LOVE'S SACRIFICE**

by John Ford

5th, 8th—12th November at 7.45pm November 6th at 3.00pm

Tickets: Members Free, Guests £3.00 and £3.50

---

IN THE STUDIO

**MISS JULIE**

by August Strindberg

Translated by Michael Meyer

1st—8th October at 7.45pm

Members and Guests £2.50

---

**THE HIRED MAN**

by Melvin Bragg and Howard Goodall

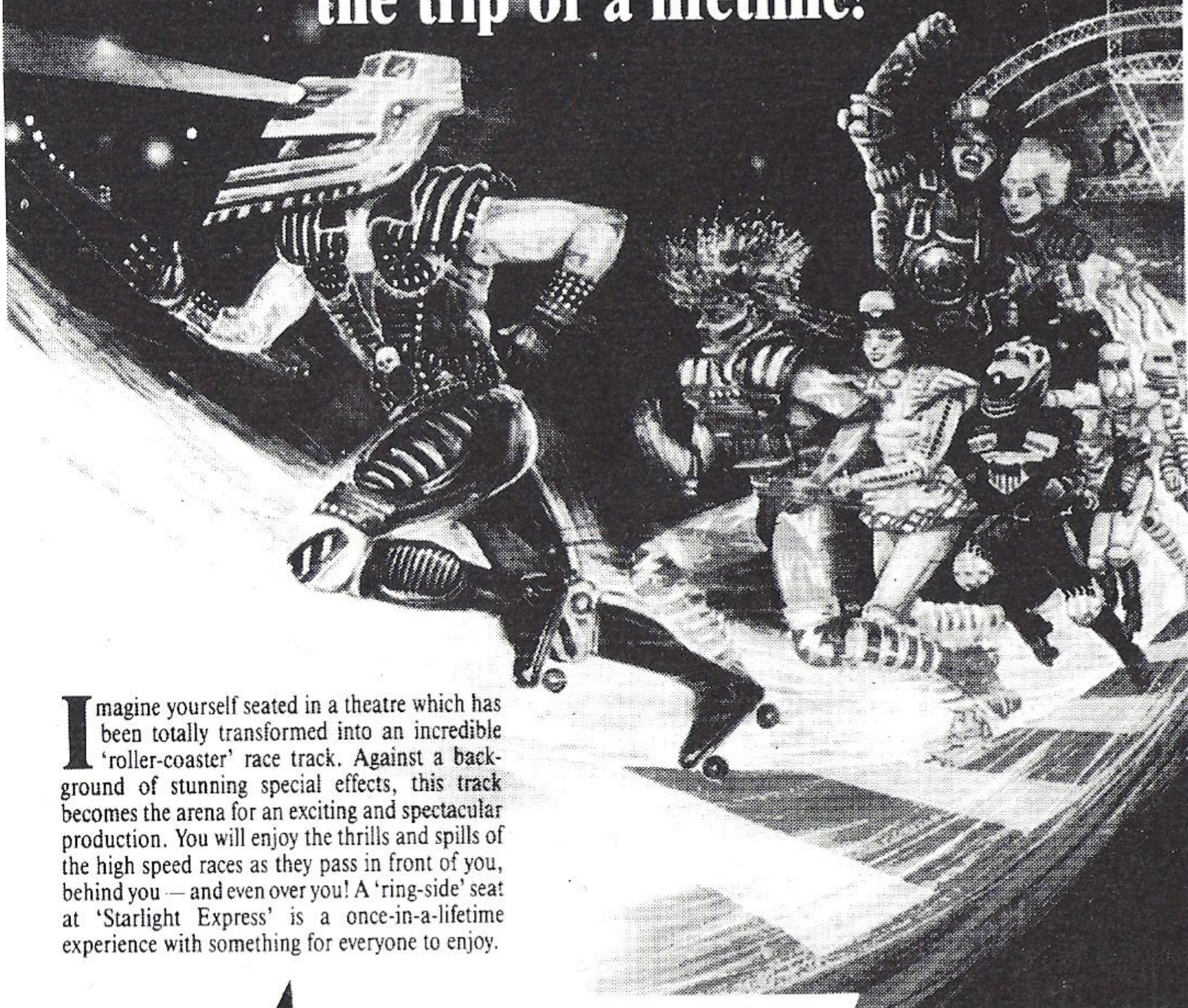
29th October — 5th November at 7.45pm 30th October and 5th November at 3.00pm

Tickets: Members and Guests £3.00





Enter a world of speed & spectacle...  
the trip of a lifetime!



Imagine yourself seated in a theatre which has been totally transformed into an incredible 'roller-coaster' race track. Against a background of stunning special effects, this track becomes the arena for an exciting and spectacular production. You will enjoy the thrills and spills of the high speed races as they pass in front of you, behind you — and even over you! A 'ring-side' seat at 'Starlight Express' is a once-in-a-lifetime experience with something for everyone to enjoy.

# STARLIGHT EXPRESS

MUSIC BY ANDREW LLOYD WEBBER, LYRICS BY RICHARD STILGOE, DIRECTED BY TREVOR NUNN

**APOLLO VICTORIA THEATRE**

Wilton Road, London SW1 OPPOSITE VICTORIA STATION

**BOOK TODAY BY 'PHONE: 01-630 6262**

Box Office open 10.00am till 8.00pm Monday to Saturday

**PARTY BOOKINGS:**

If you want to make up a party there are big savings for groups of 10 or more! Ring Tracey or Pat in the Party Booking Office at the theatre on **01-828 6188**.

**PERFORMANCE TIMES:**

Evenings at 7.45pm

Matinees Tuesday & Saturday at 3.00pm

(Performance lasts 2½ hours)



**PRICES OF ADMISSION**

Stalls £7.50 - £20.00

Dress Circle £7.50 - £19.00

## SHAKESPEARE DRIVES A VOLVO

As a busy playwright, Mr William Shakespeare has little time in which to shop around, so, when his friend, F. Bacon, told him of the super deal he received when he bought his Volvo at Triangle, the Bard decided to pay them a visit. He was so happy, with the Dealer and the car he bought, that he wrote a play and called it "The Merchant of Volvo".

His handwriting never was very easy to read.....

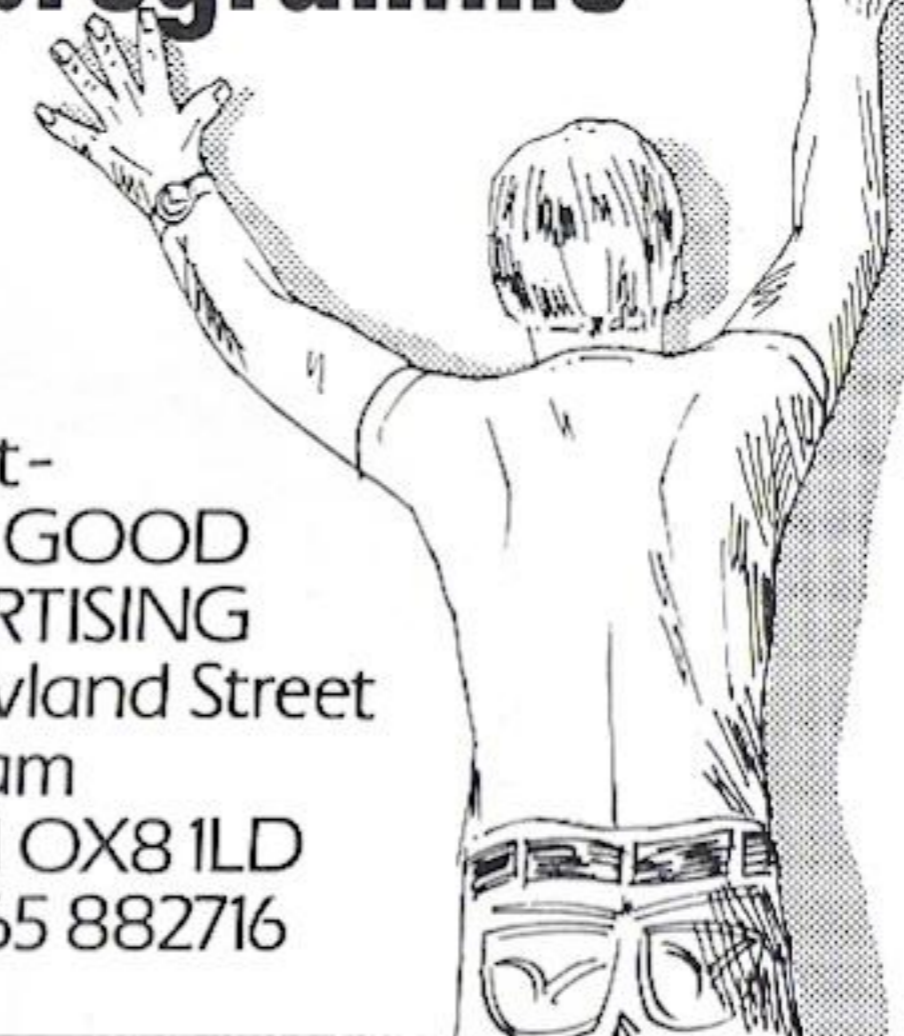
**VOLVO TRIANGLE**  
35-39 South Ealing Road  
London W5 4QT

**01-567 5484**

*Less drama... more Volvo*

For  
Details of  
advertising  
space in this  
programme

Please contact-  
JOHN GOOD  
ADVERTISING  
65 Newland Street  
Eynsham  
Oxford OX8 1LD  
Tel: 0865 882716



**VICKERS  
& CO  
SOLICITORS**

FOR QUICK AND FRIENDLY  
ADVICE  
WHEN YOU NEED IT

ARE YOU:—

- BUYING OR SELLING  
A HOUSE OR BUSINESS
- SUING OR BEING SUED
- HAVING FAMILY TROUBLE
- IN TROUBLE WITH THE  
POLICE

RING STEPHEN INGALL  
on 579-2559

or

ALEC ATCHISON  
on 459-1125

183 Uxbridge Road,  
Ealing, London W13 9AA



A LEGAL AID  
PRACTICE  
24 HOUR  
EMERGENCY  
SERVICE